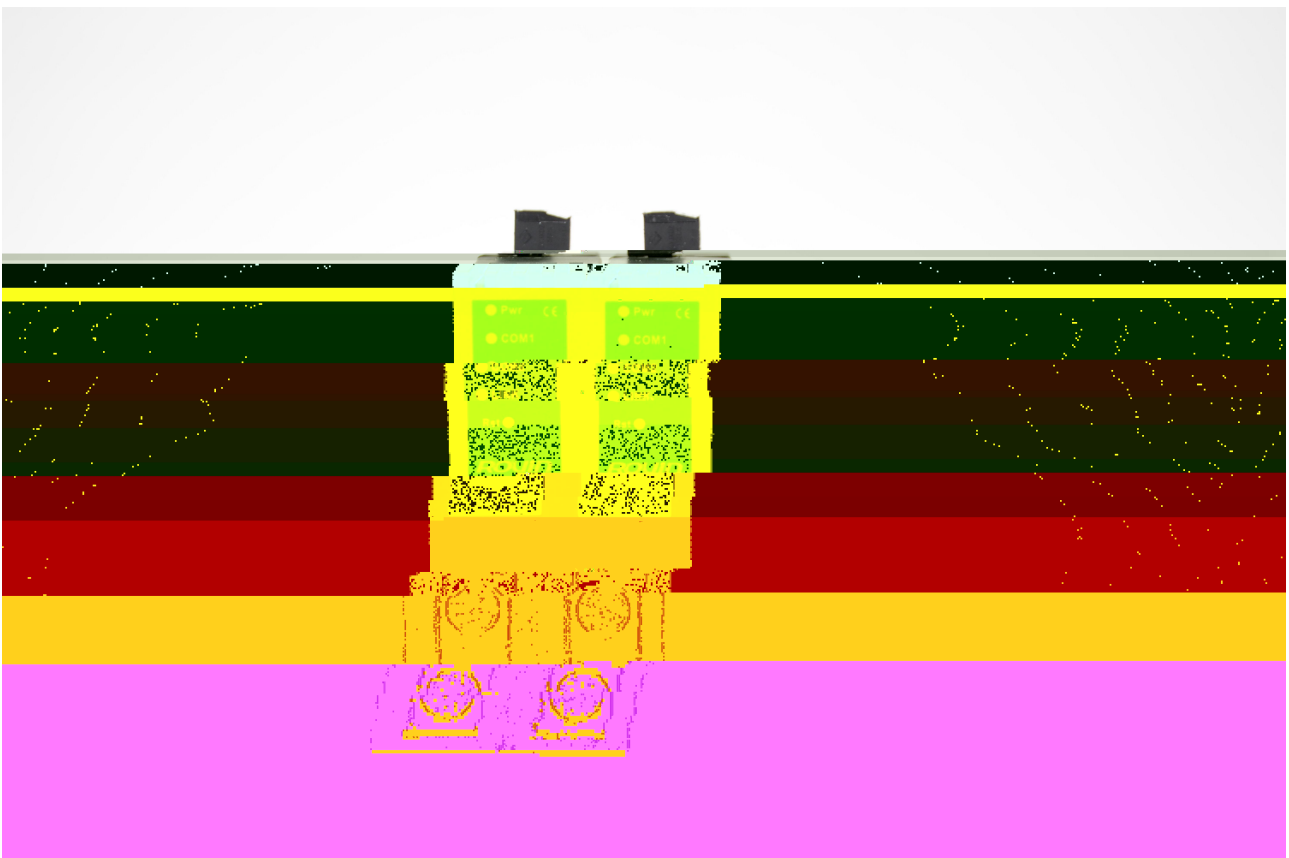

ROUIN

PLC



1.1

RVNet-XJ

RVNet-XJ

2. P

1.2

1

@ ¼

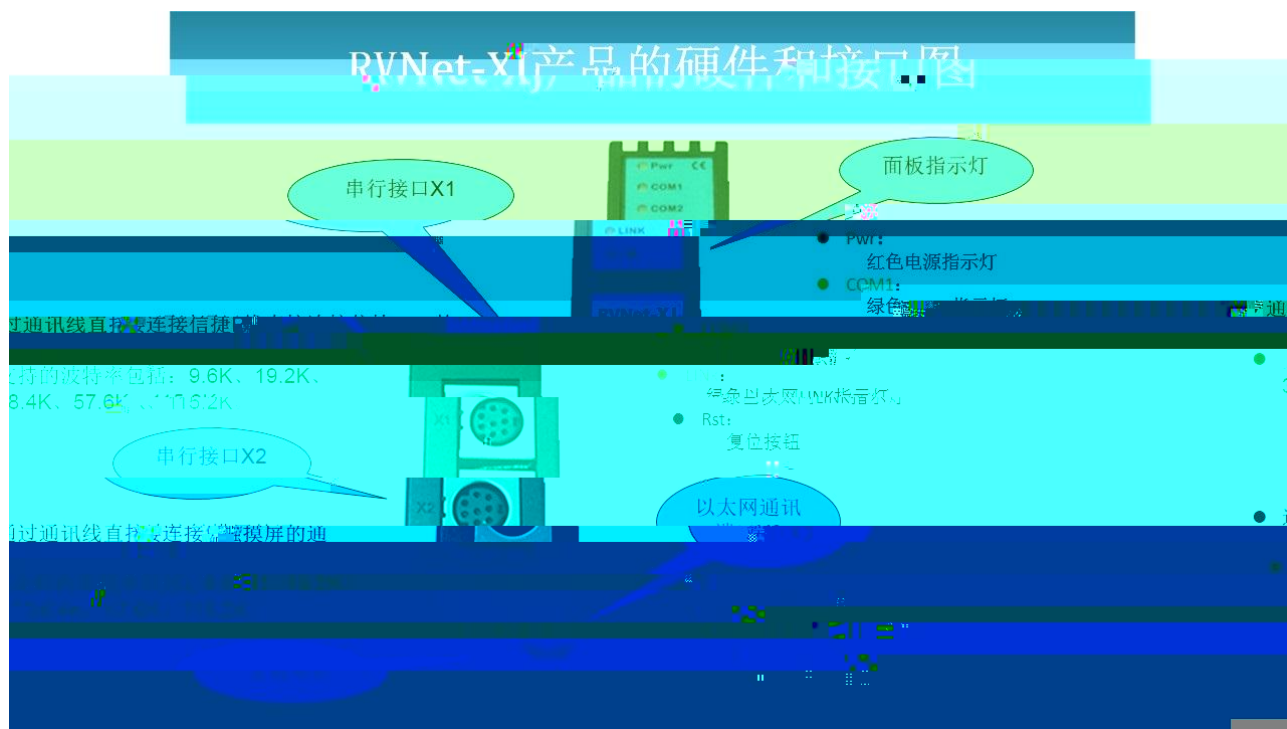
2. N

N %

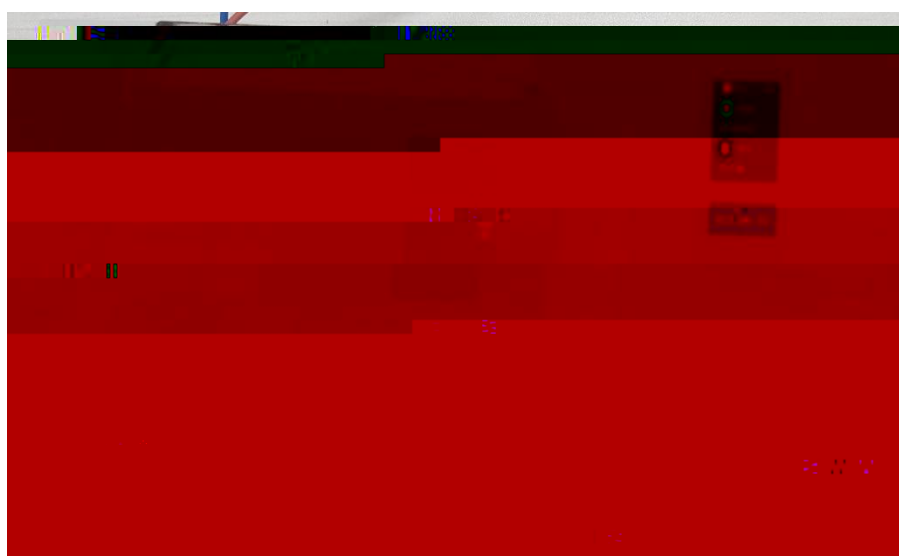
RVNet-



2.1



2.2



23

231 XI

232 X2

233 X3

234 24VDC X4

24



8 c z

3.2.1



0 0 Ÿ 0 9

0

m

9 6

T p Ÿ P „U3 6

f

^

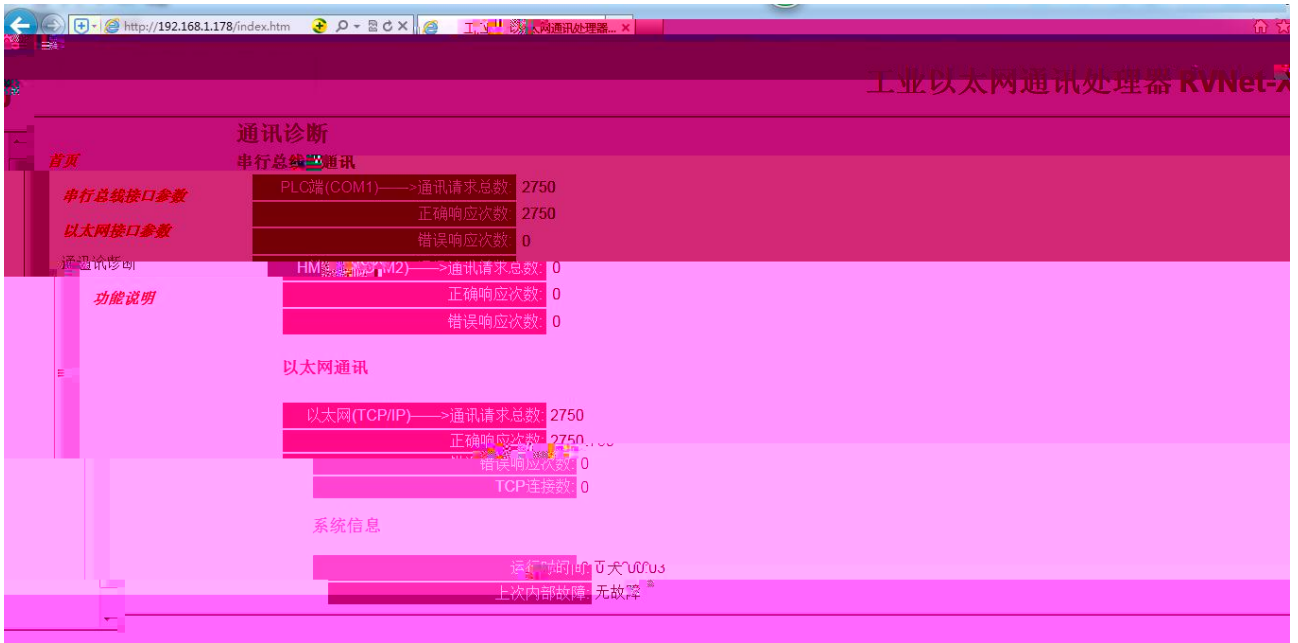
Ã OE} R Y° ñ' ðÐ—ð

Þ Æ P

3.2.2



3.2.3



RVNet-XJ
ModbusTCP

SCADA

RVNet-XJ
OPC

PLC

ModbusTCP

ModbusTCP

ModbusTCP

ModbusTCP

PLC

Modbus

PLC

FC1 FC2 FC3

FC5 FC6 FC16

2 ModScan32

1. \ \ modscan2_cr.rar

1. ModScan32

2. Connection/Connect Remote TCP/IP Server RVNet-XI IP Service
502 [OK] 1

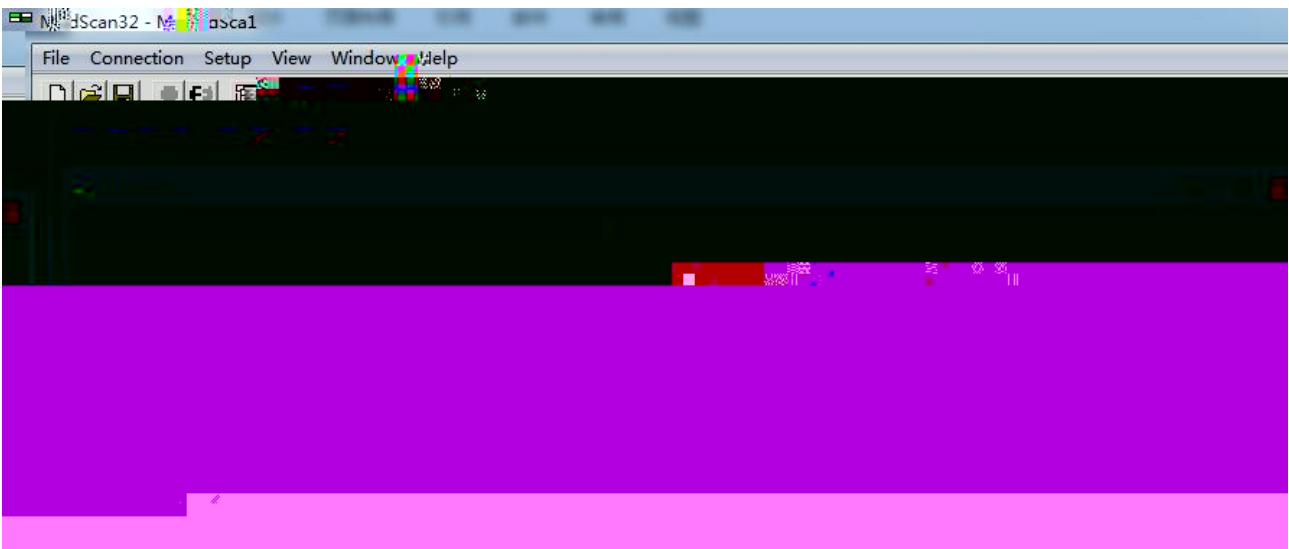


1

3. " ModSca1" Device ID PLC 1 03: HOLDING REGISTER
Address = 0001 Length = 10

4. 40001 40010 16 PLC D0 D9

2



2

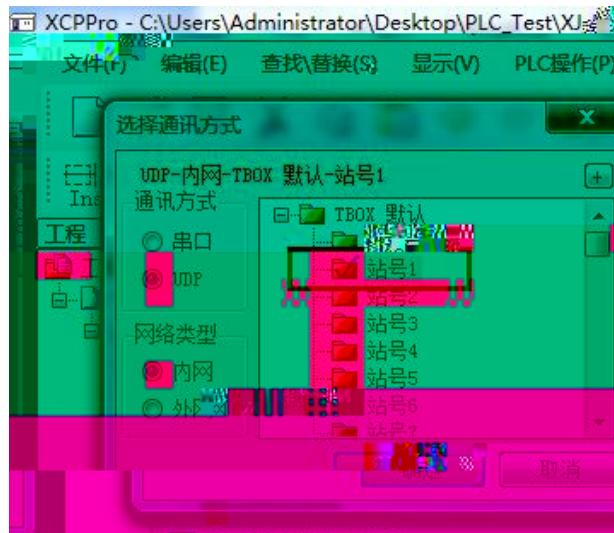
5.

4.1 RVNet-XJ

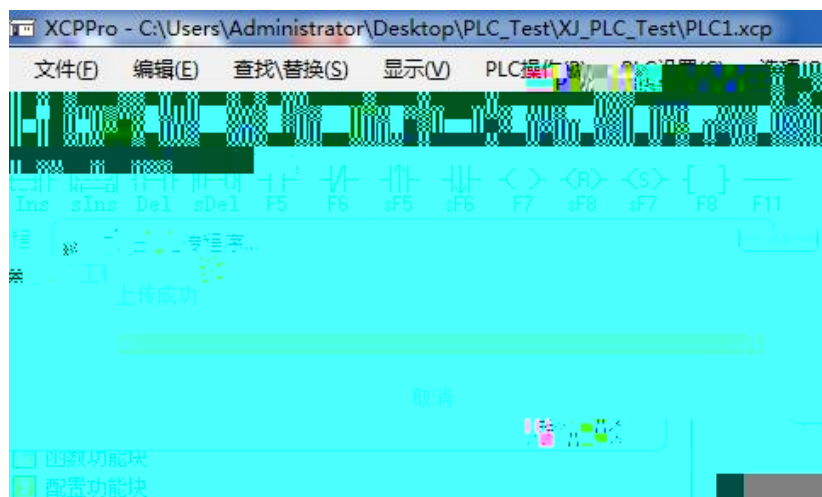
1. XCPPro " " " TCP_IP " TBOX RVNet-XJ
IP



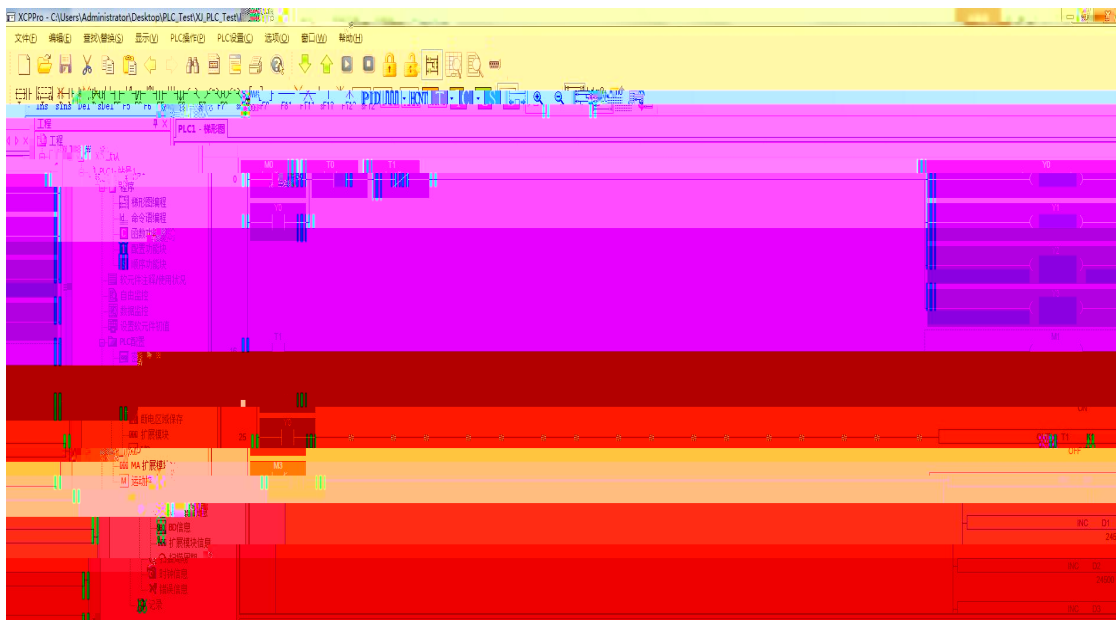
2. " " " " " UDP- - TBOX - 1"



3. PLC



4.



4.2 RVNet-XJ

1.

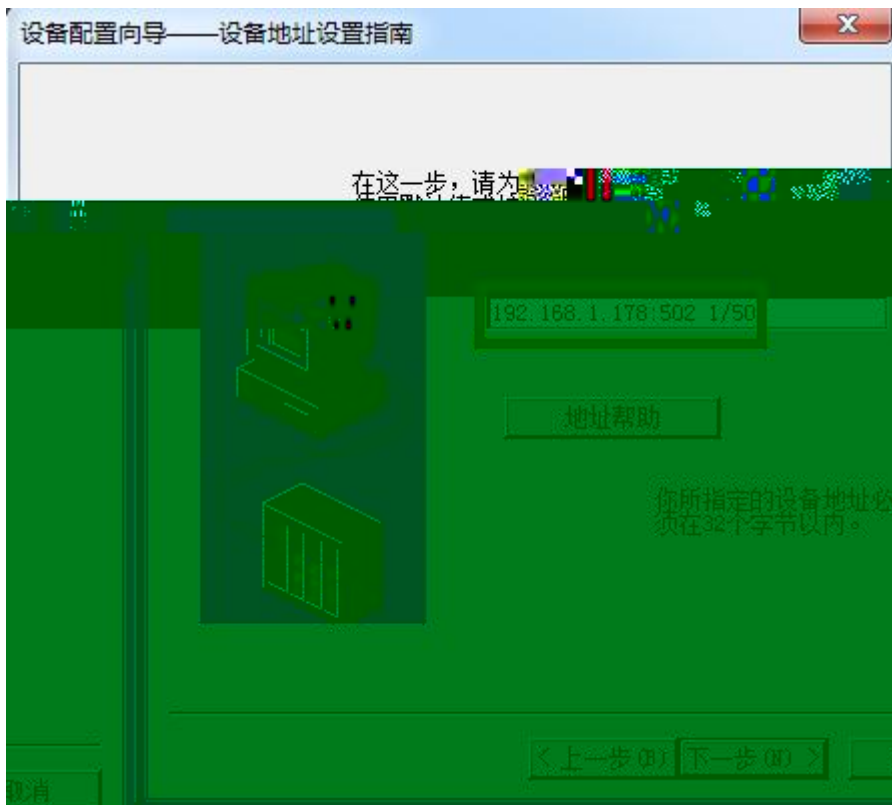
2. " COM" " "

" ModbusTCP—TCP" " "

4. RVNet-XJ IP

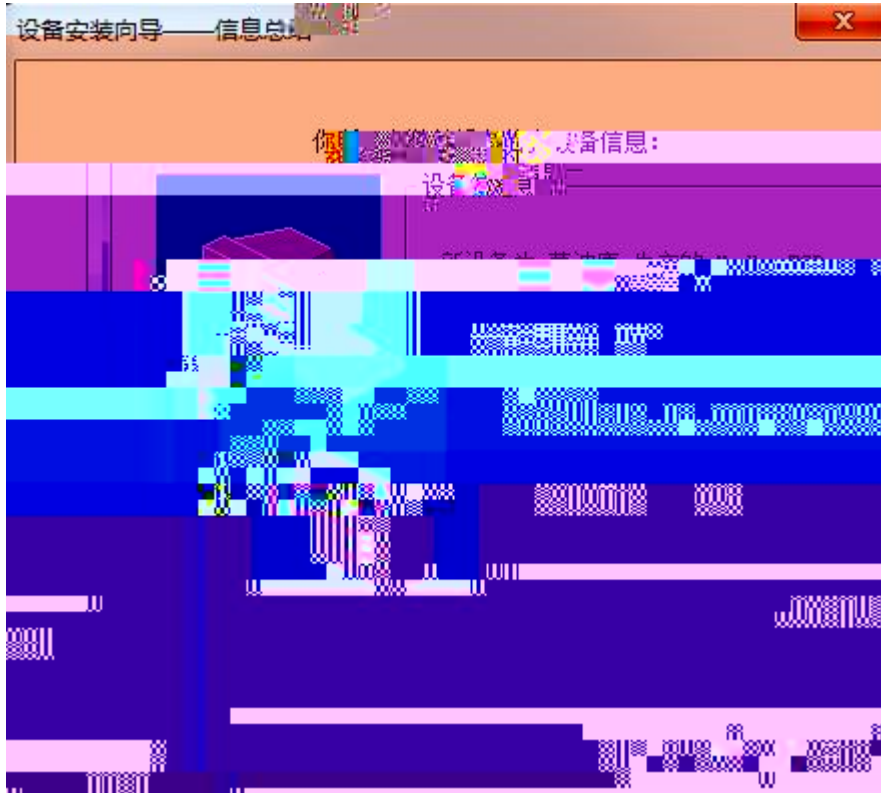
/

192.168.1.178:502 1/50



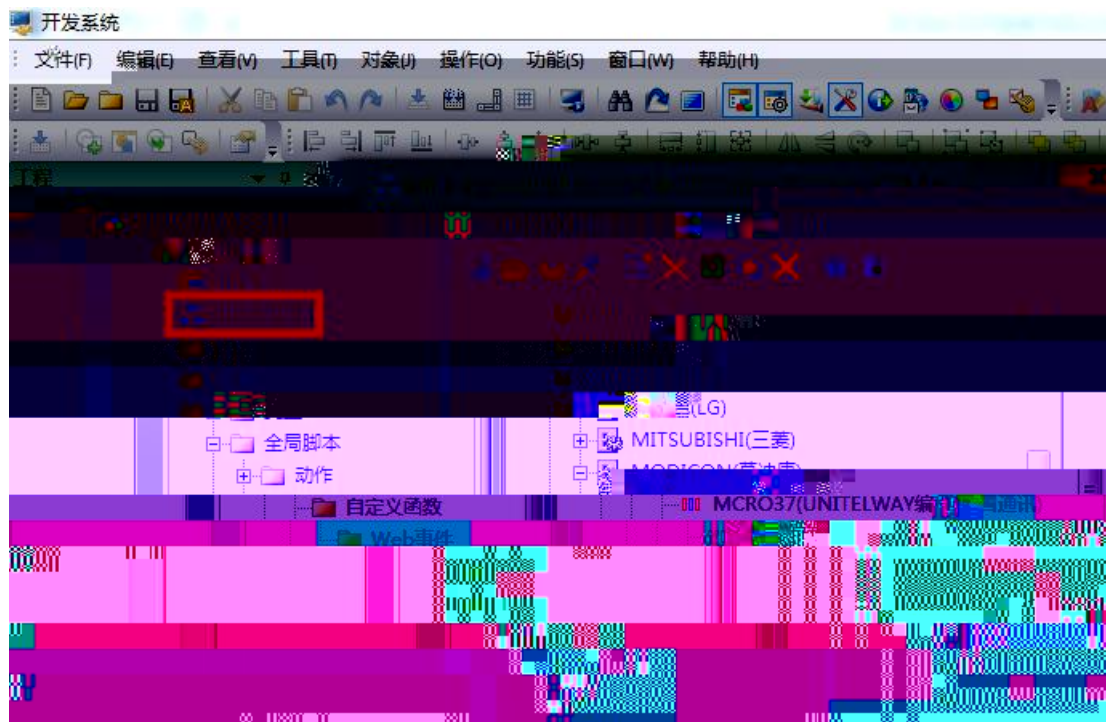
5.

" "



4.3 RVNet-XJ

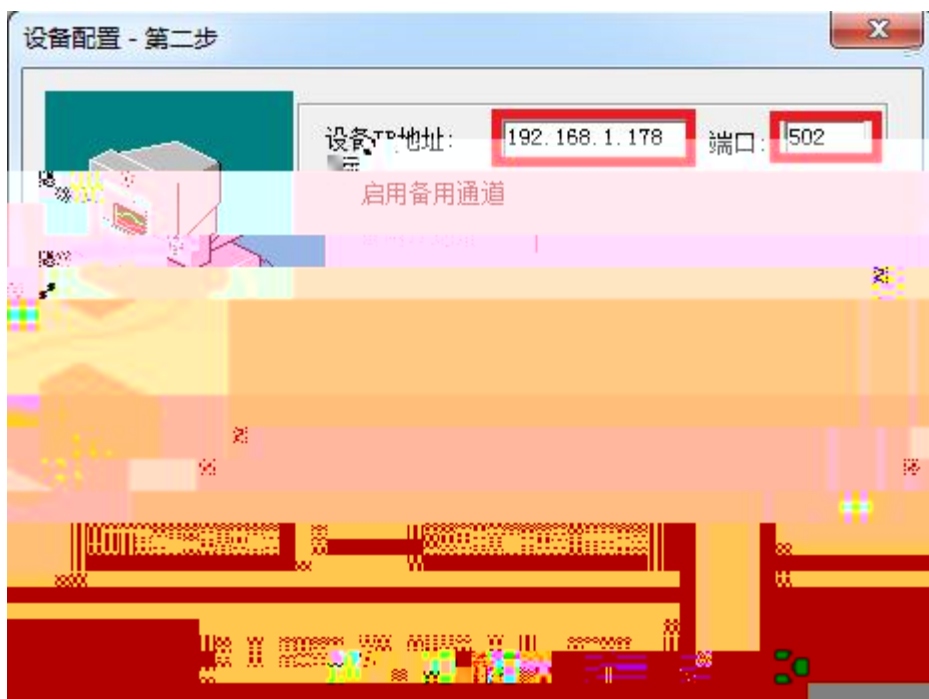
1. " IO " PLC " MODI CON -MODBUS TCP "



2. " " DVP " " 1 " "



3. " IP " RVNet-XJ IP 192.168.1.178 " " 502



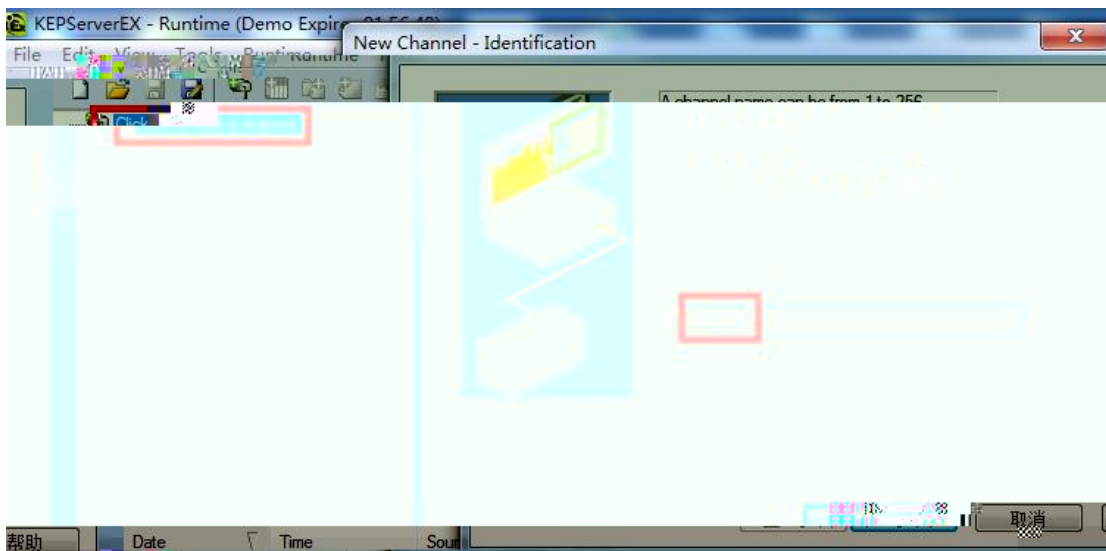
4.



4.4 RVNet-XJ

1. " " " " " MB_TCPI P " "

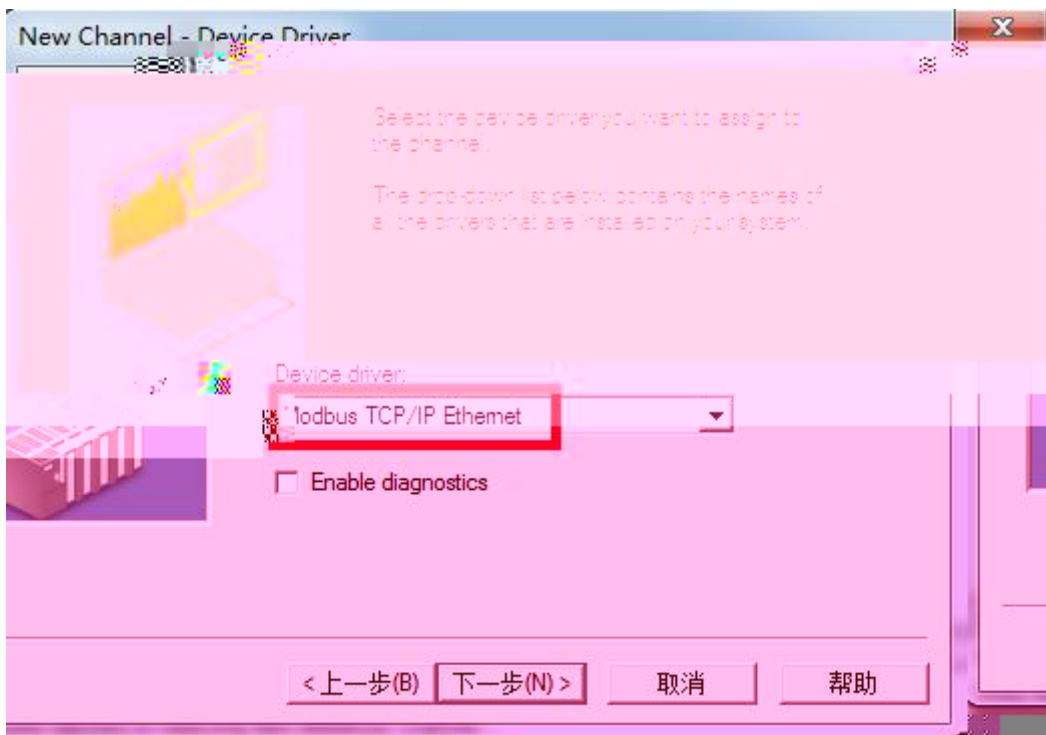
"



2. " Modbus TCP/IP Ethernet"

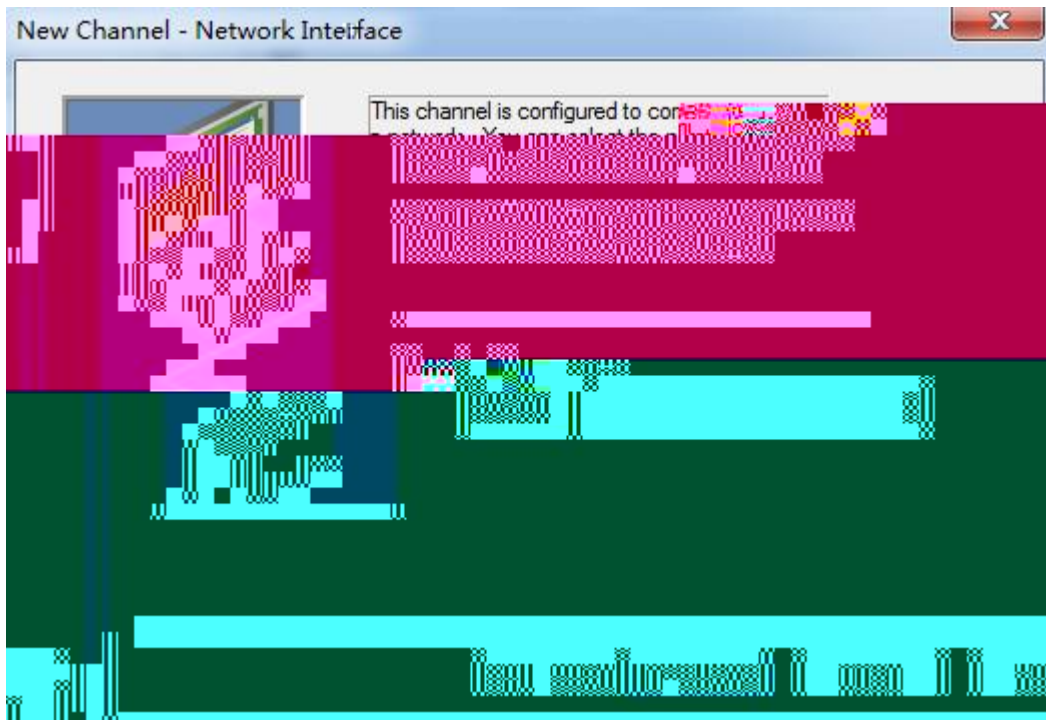
"

"



3.

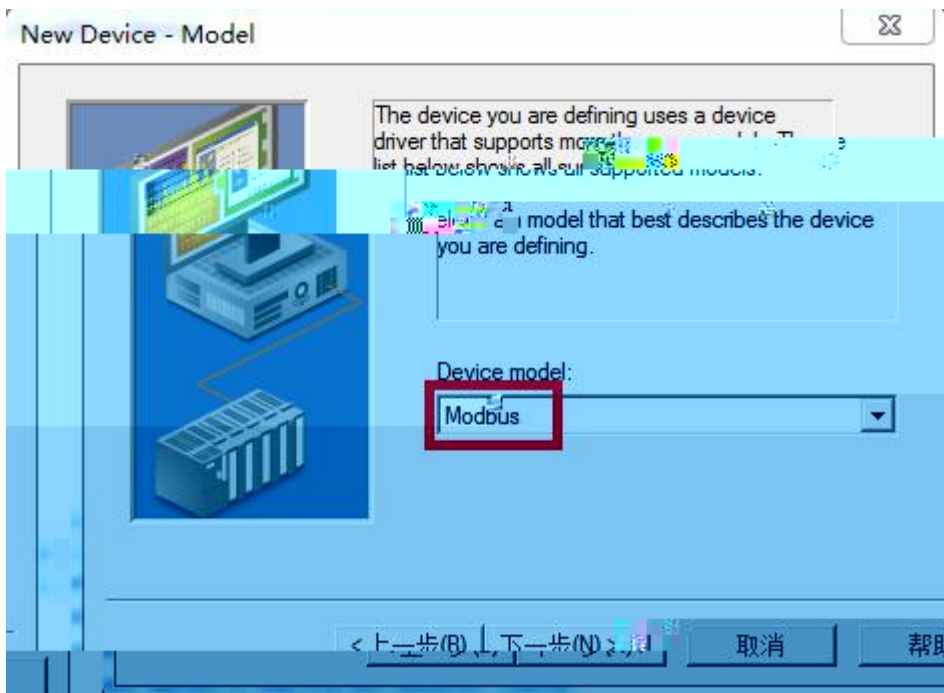
" Default"



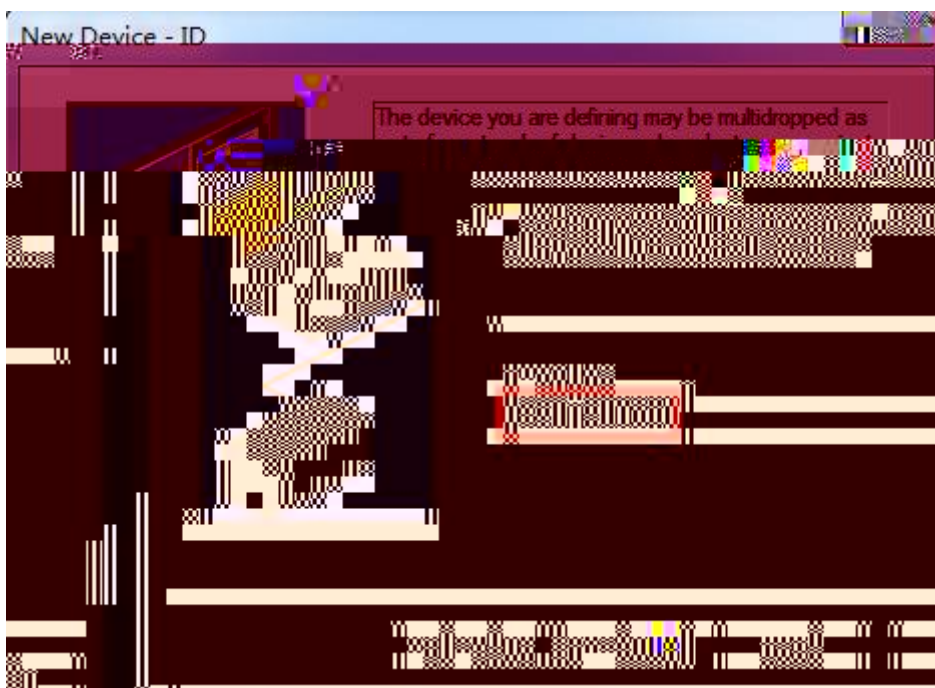
4. " click to add a device" , " " "



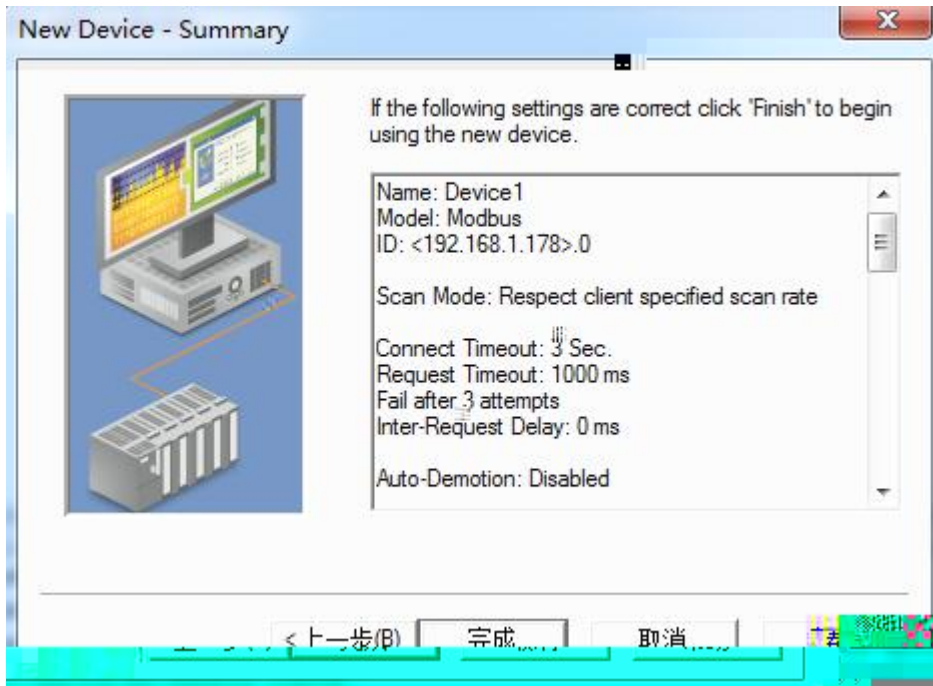
5. " Device Model " " Modbus"



6. " Device ID" IP .0 192.168.1.178.0

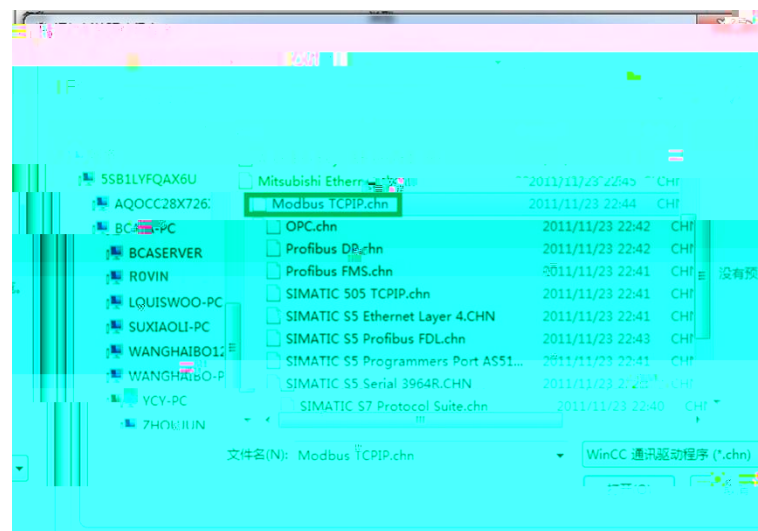


7.



4.6 RVNet-XI

WINCC



" " " " " "

