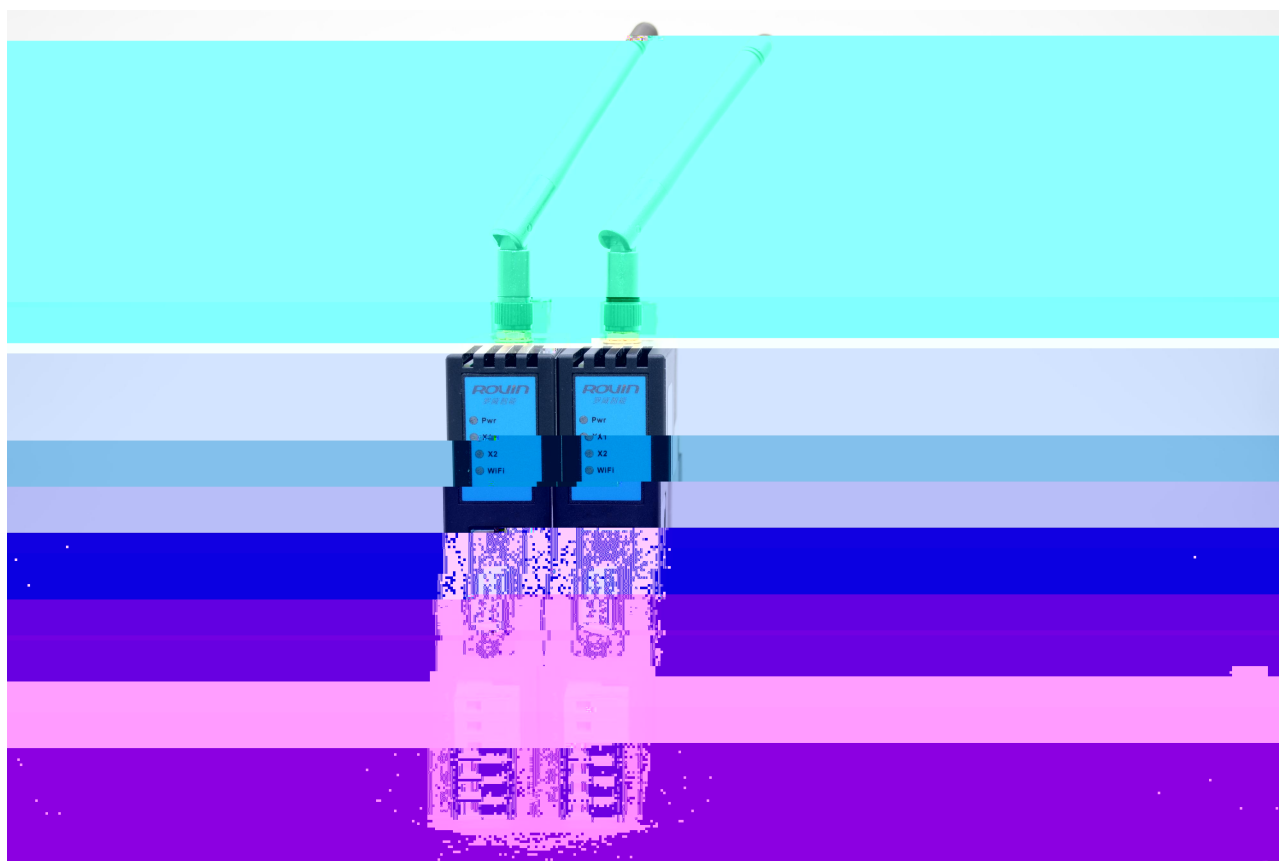


**ROVIN**



---

## 1.RVNet-WiFi

FJBYh! K]: ]

% K]: ] &

'

K]: ]

FG& &#(, ) #(&&

K]: ] #

D@7

% ' )aa

87&(J

& K]: ]

' K96

( CD7

) FG& &#FG(, ) #FG(&&

# #K]: ]

\* GH5 5D K]: ]

+ AcXVi g

AcXVi g FH

AcXVi g H7D

'

---

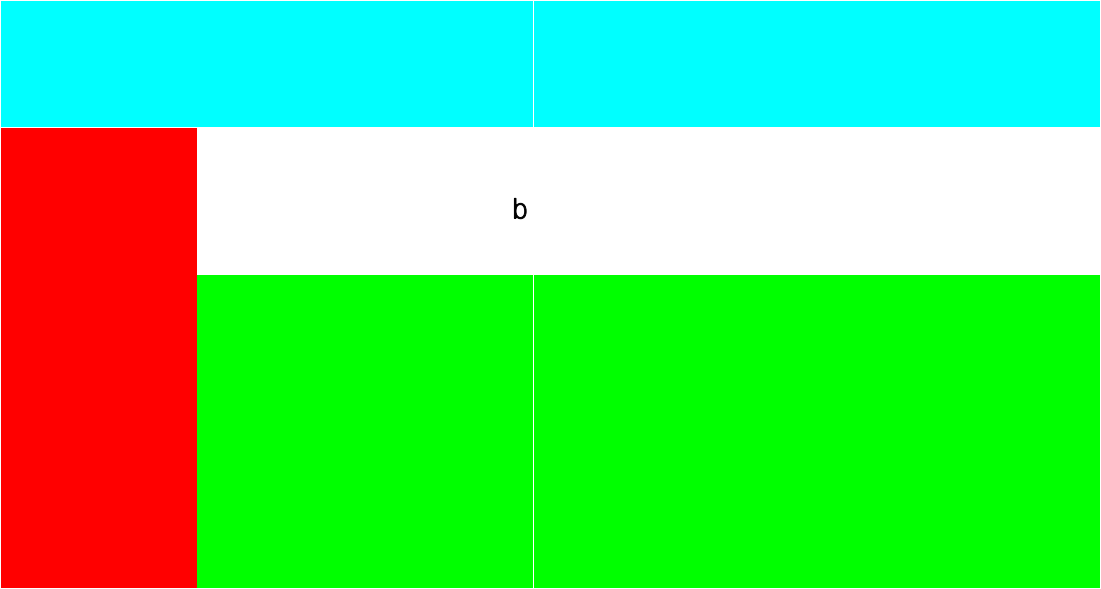
RS232/485/422转WiFi/以太网  
支持 AP、STA 模式

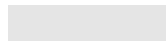
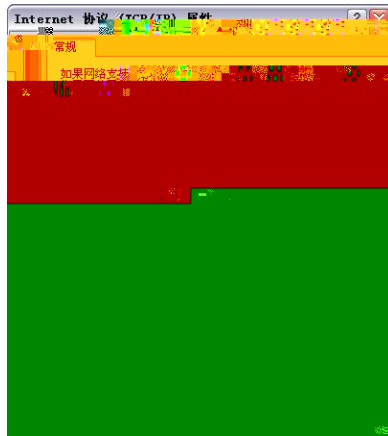


FJBYh! K]: ]

K]: ]











---

% &

@5B =D

@5B

@5B

=D

G+5

K]:] =D

8<7D

FJBYh! K]:]

=D

---

|

设备信息

参数配置

通讯诊断

修改密码

功能说明

## 通讯诊断

### 网络通讯

WiFi->通讯请求总数: 581  
正确响应次数: 575  
错误响应次数: 0  
TCP连接数: 2

Lan->通讯请求总数: 576  
正确响应次数: 575  
错误响应次数: 0  
TCP连接数: 1

### 串口通讯

COM->通讯请求总数: 0  
正确响应总数: 0  
错误响应次数: 0

### 系统信息

运行时间: 0 天 0:1

## 设备信息

去新配置

通讯诊断

修改密码

功能说明

## 修改密码

修改密码后，点击[确认]按钮

原密码:

新密码:

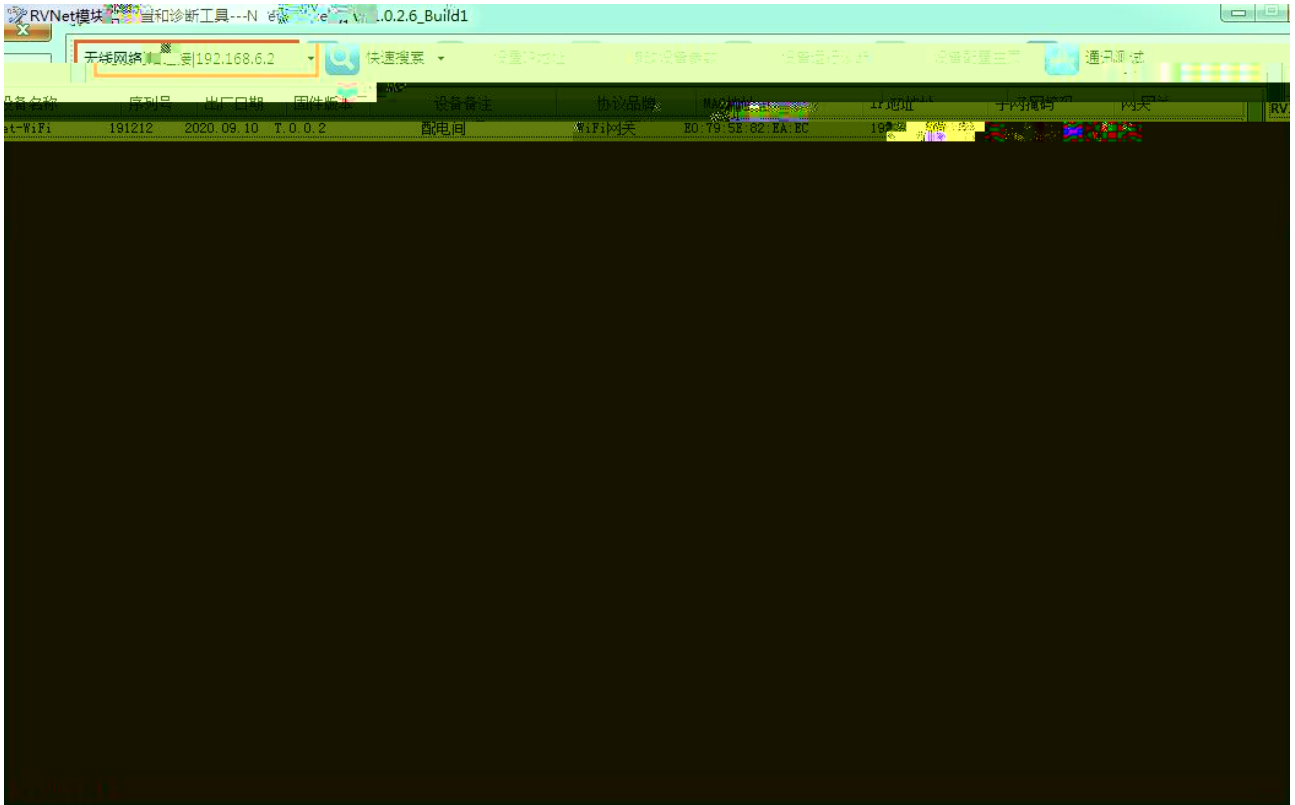
确认

---

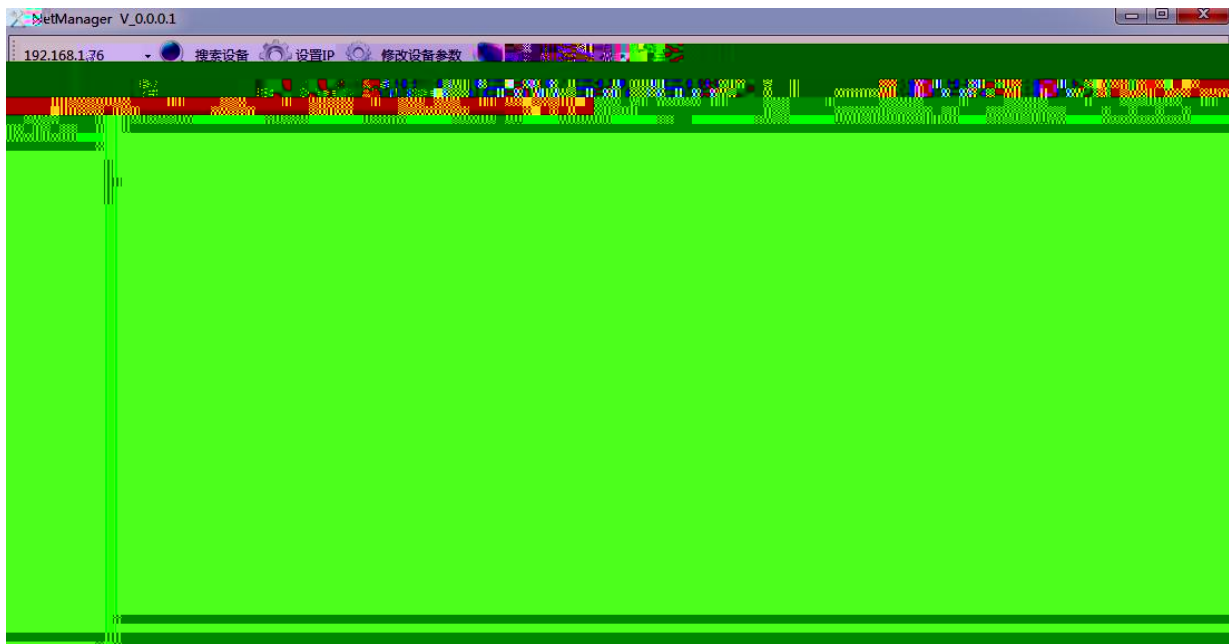
†V ‡ 7 “

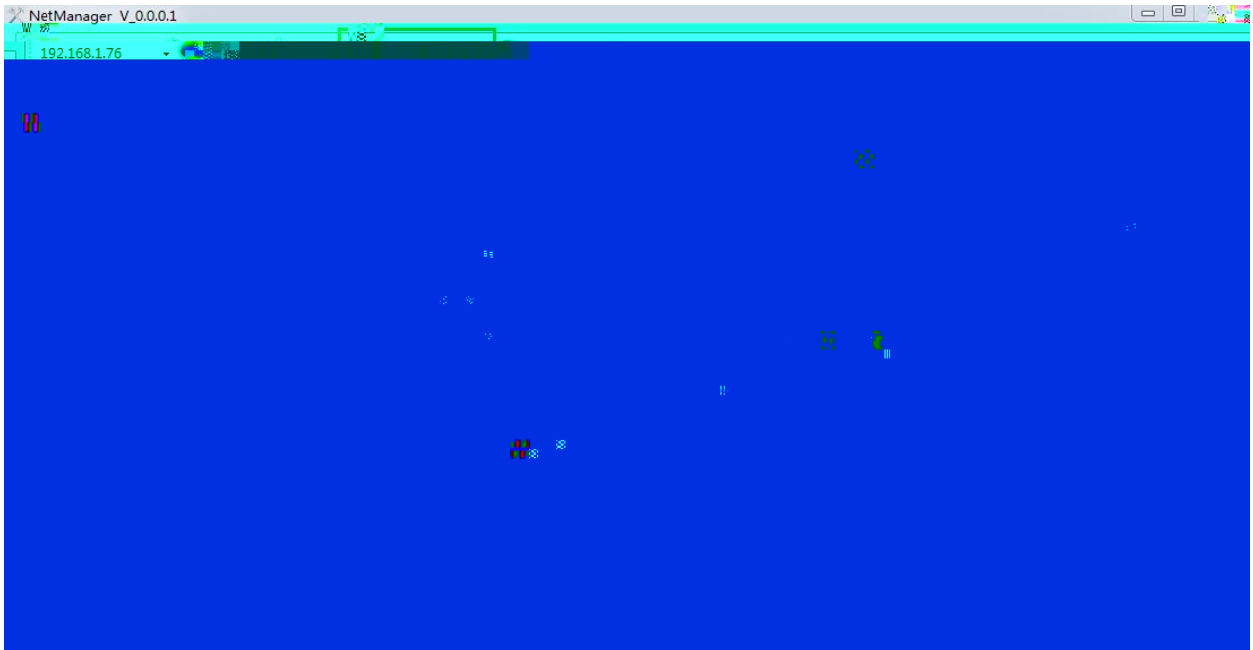
---

|



#### 4.NetDevice







FJBYh! K]:]

D@7

% BYh8Yj ]W

%

D@7

%

\$

%



&

D@7



---

=D

f

ž b a"

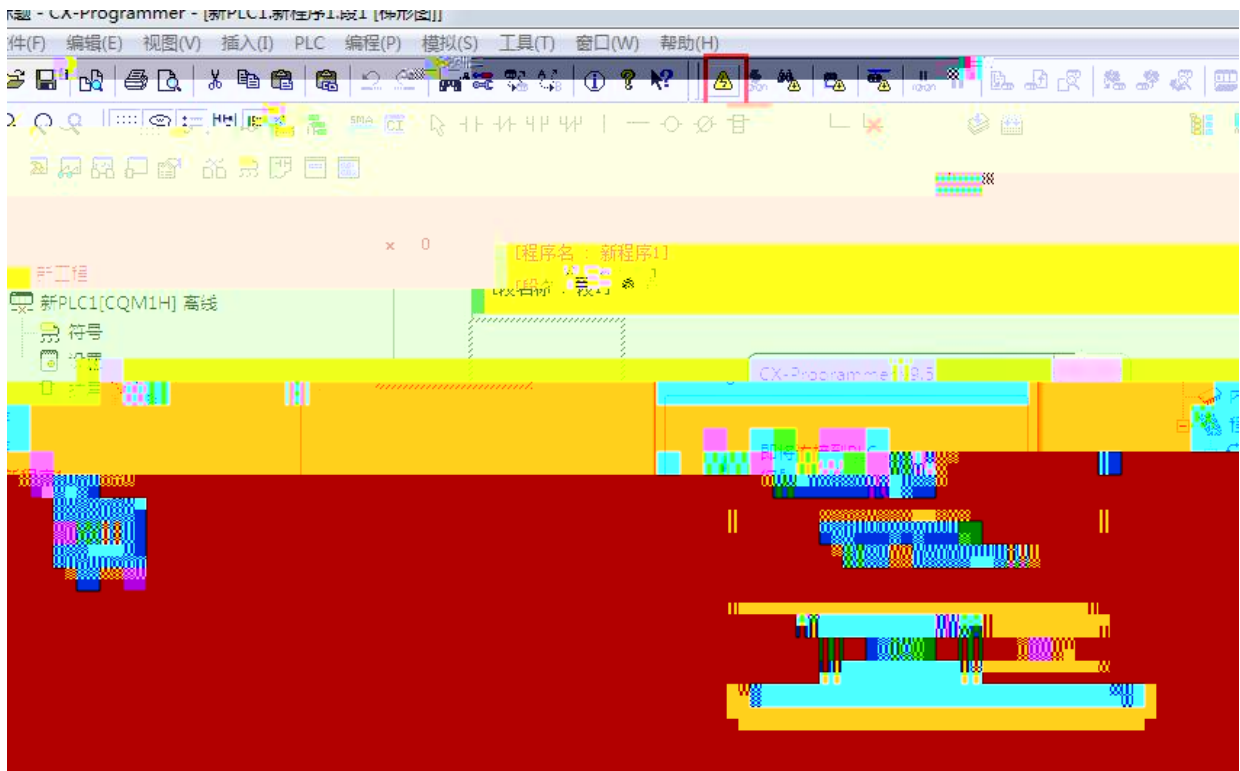
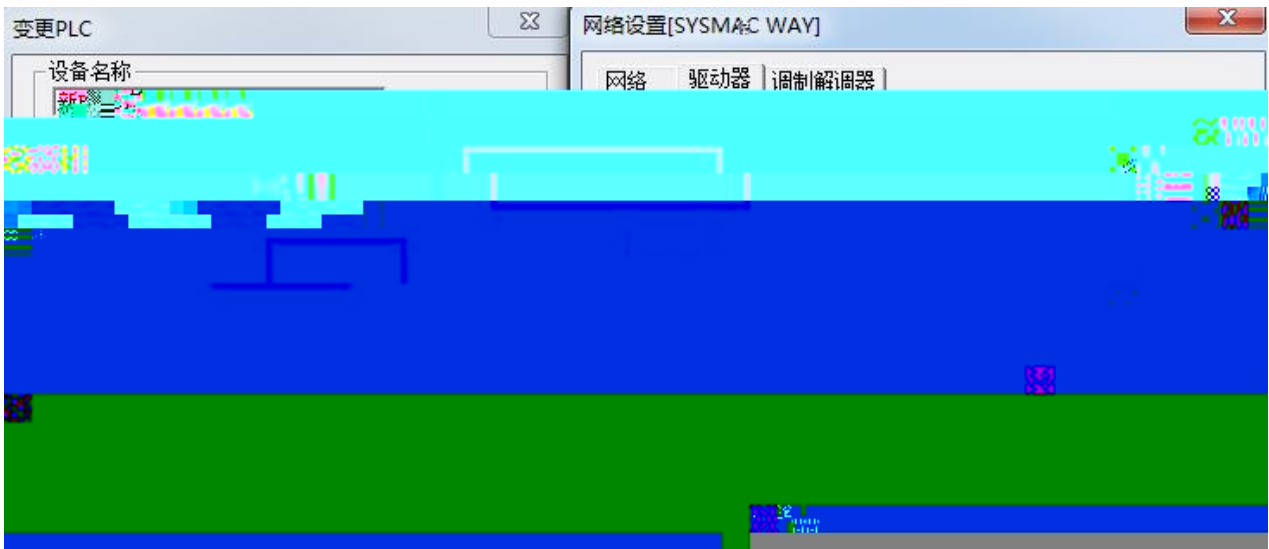
=D

Db

@5B

=D

b

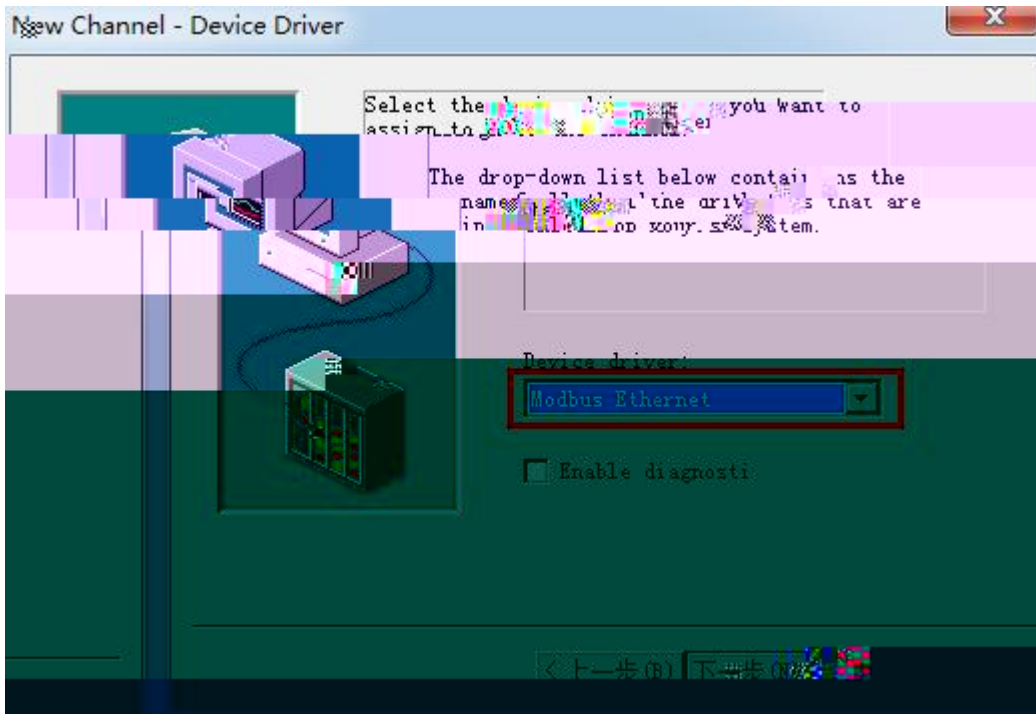




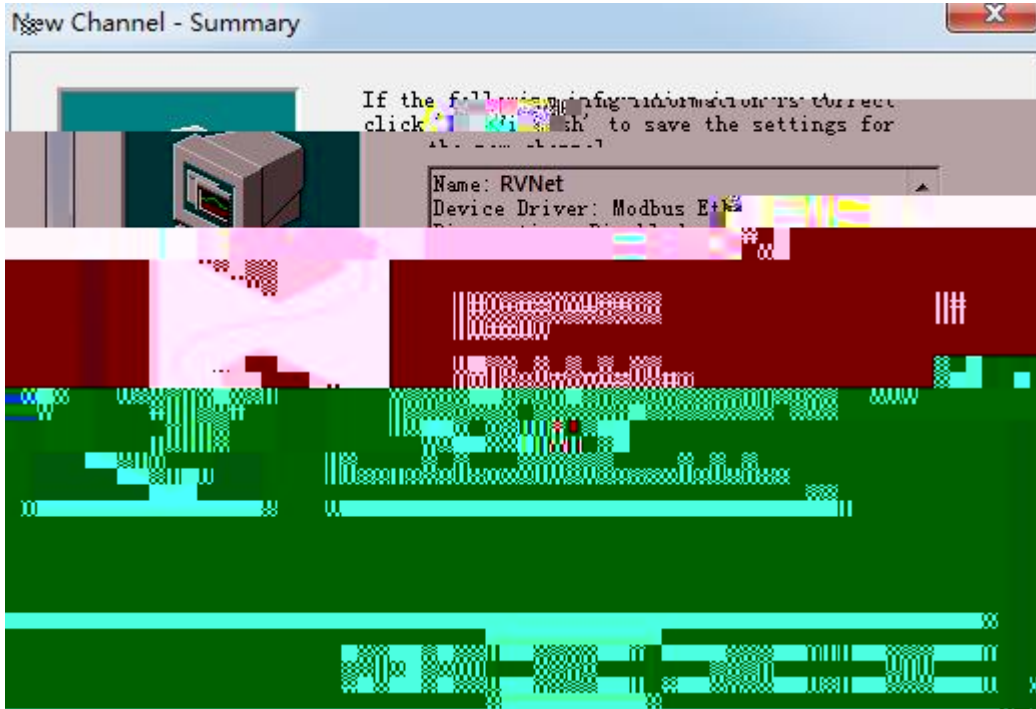




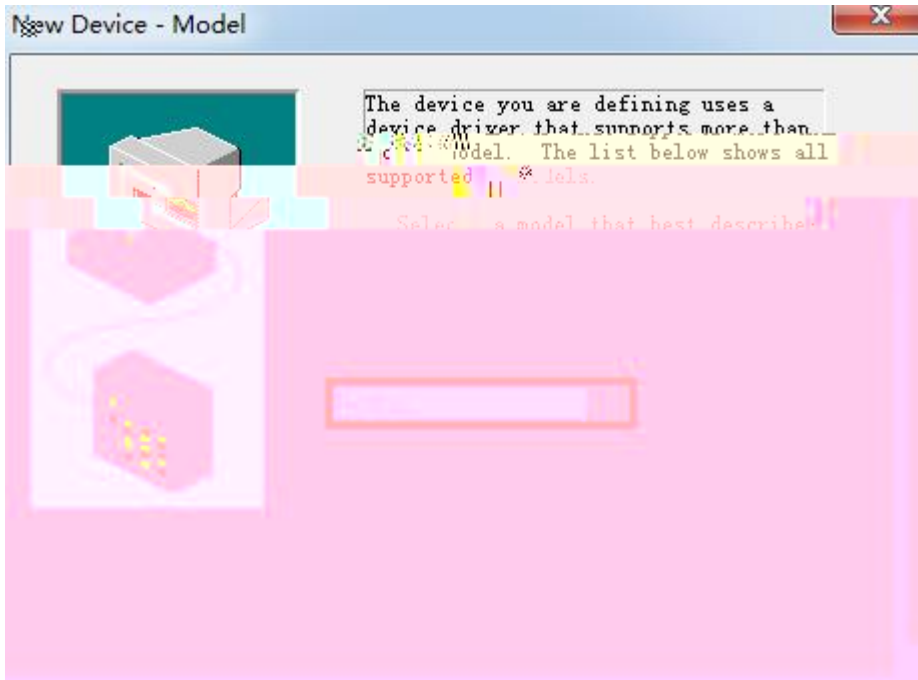
% AcXVi g 9h\YfbYh



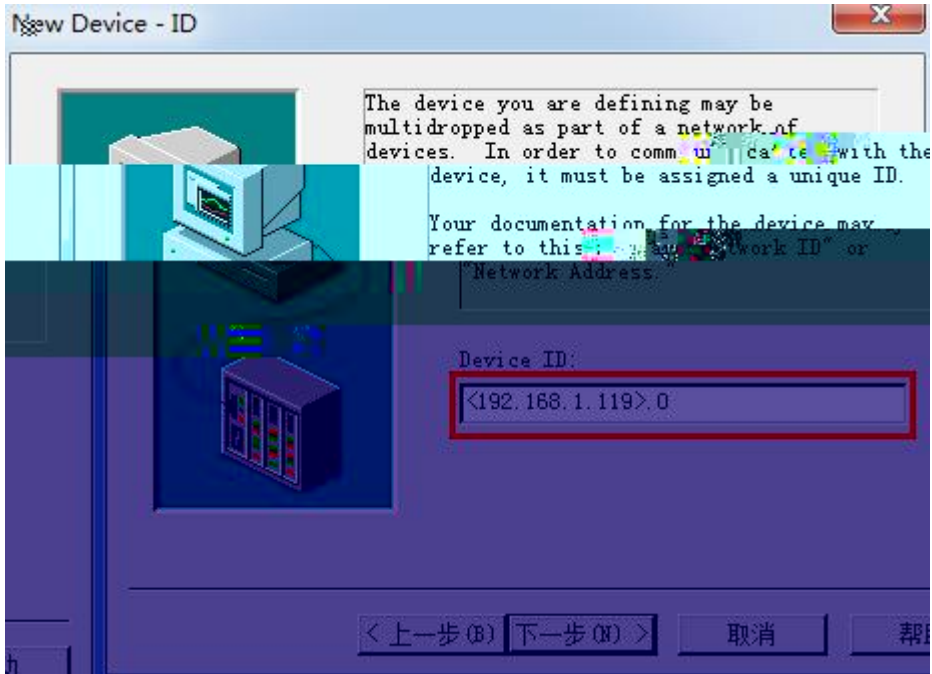
&



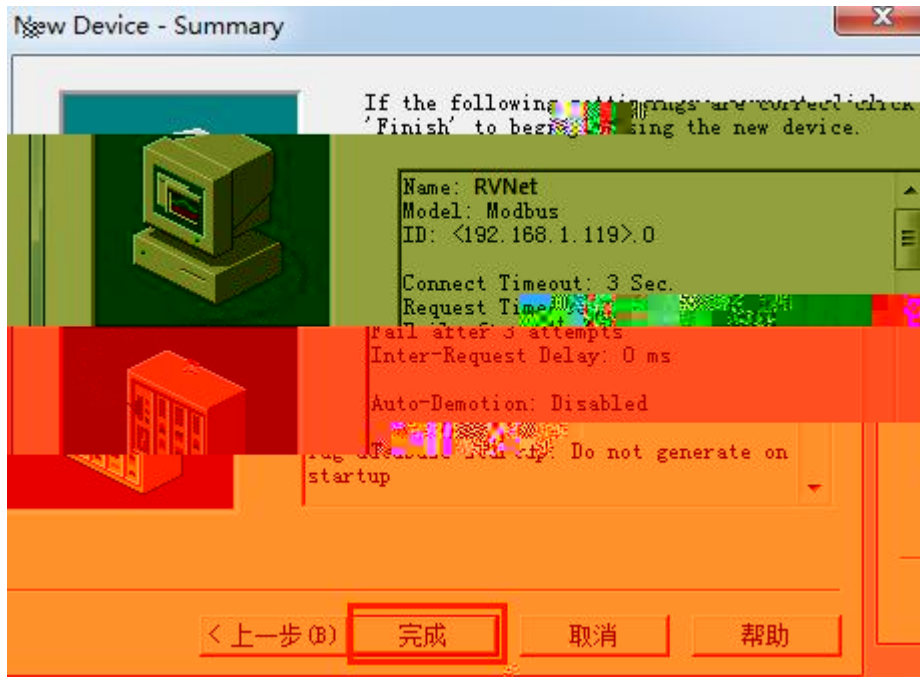
' AcXVi g



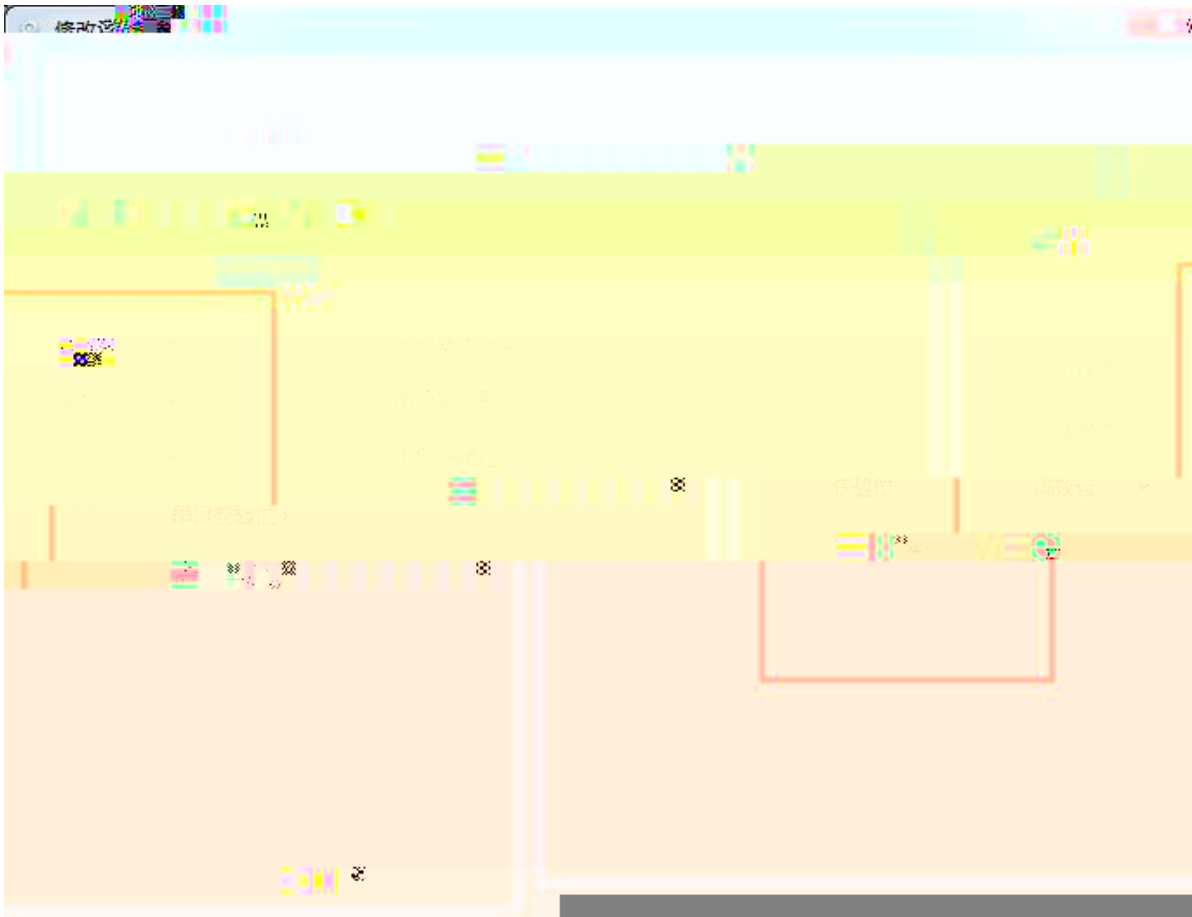
( K]:] =D AcXVi g



)





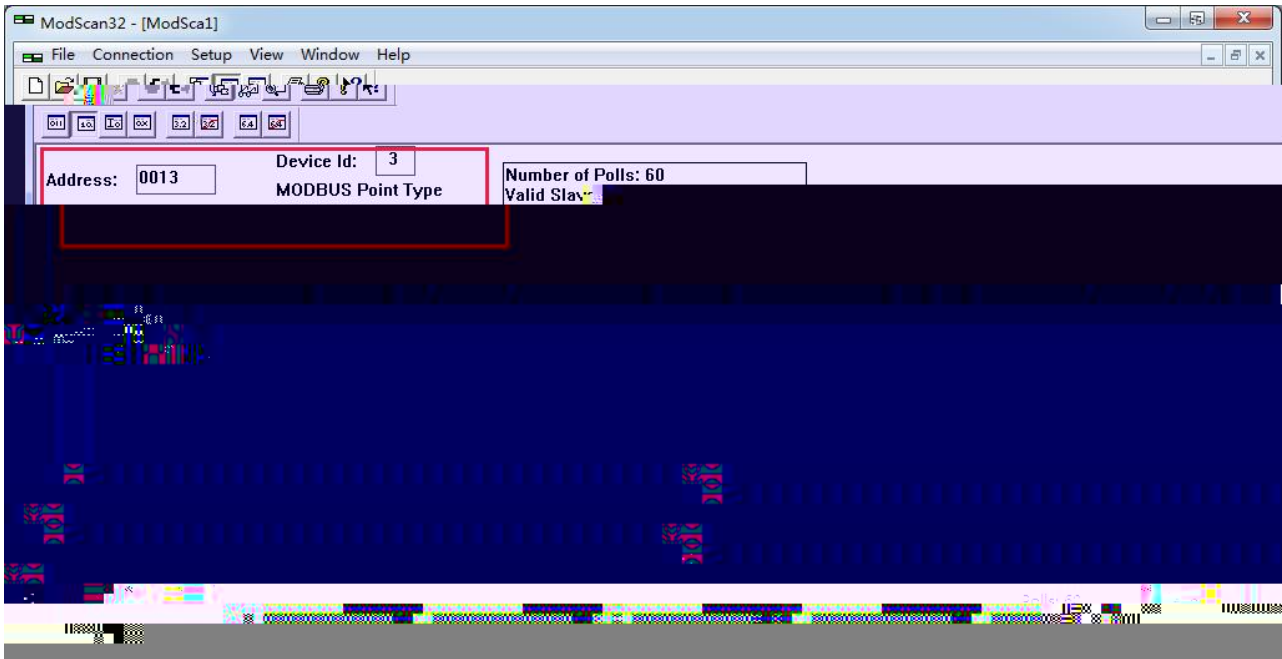




( K:]

)\$&







---

7.

