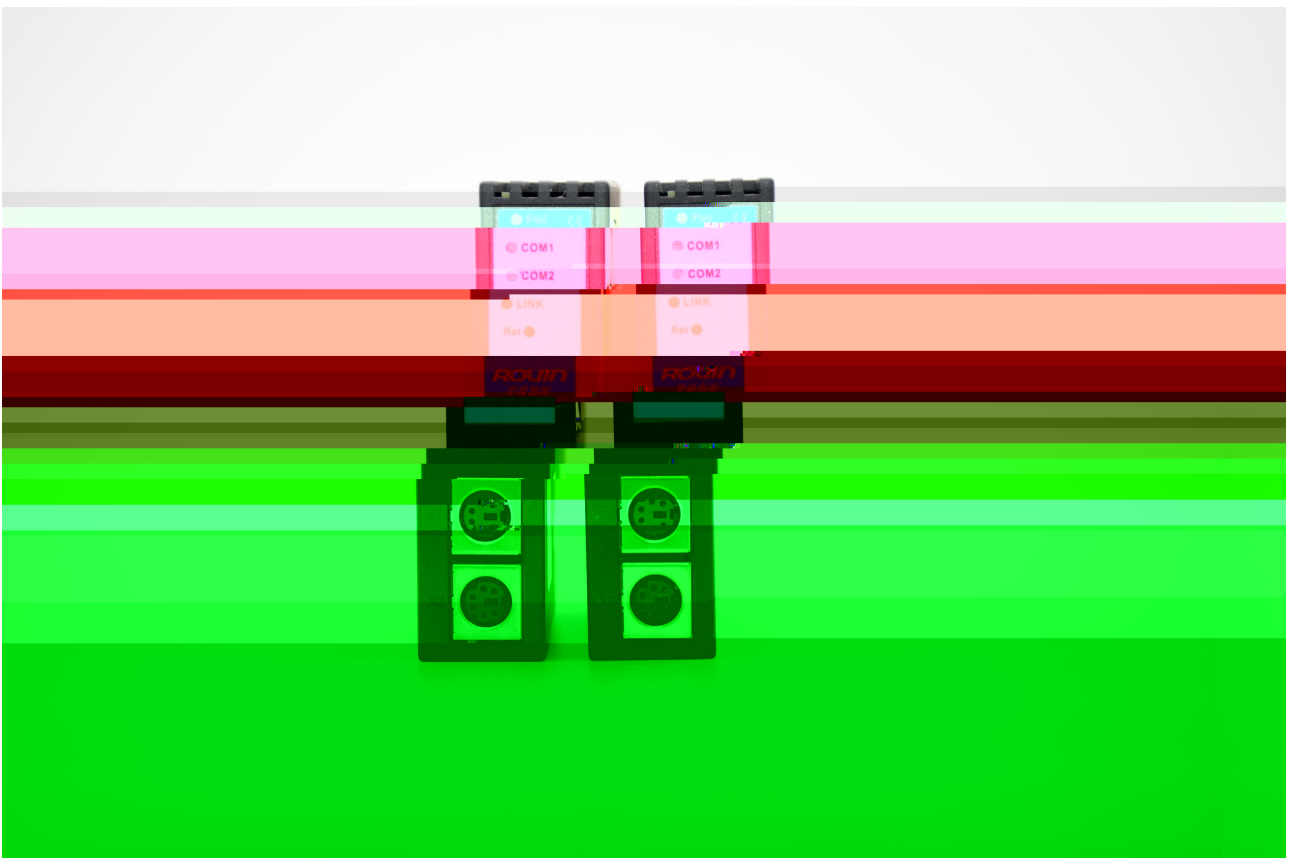
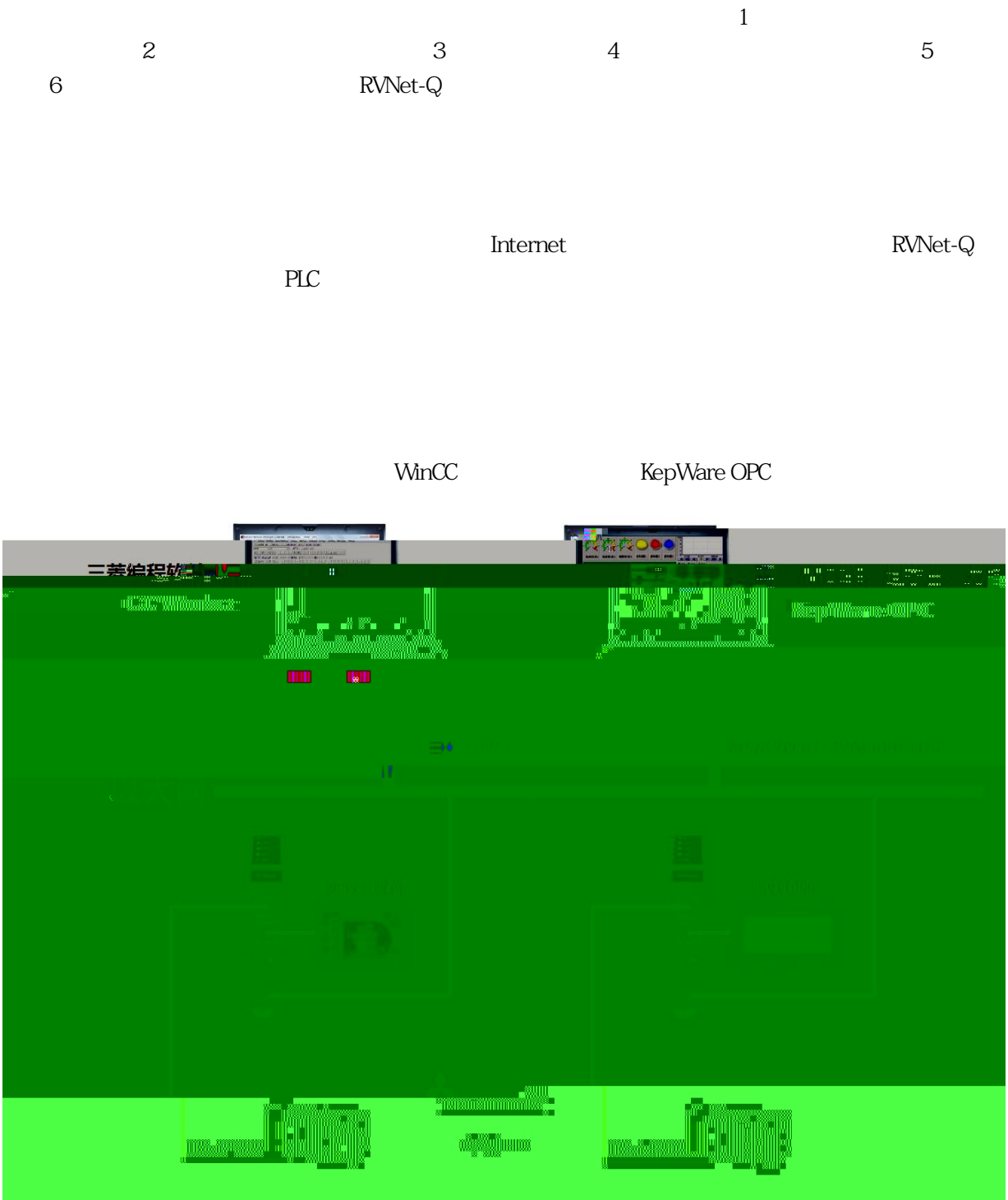

ROUIN

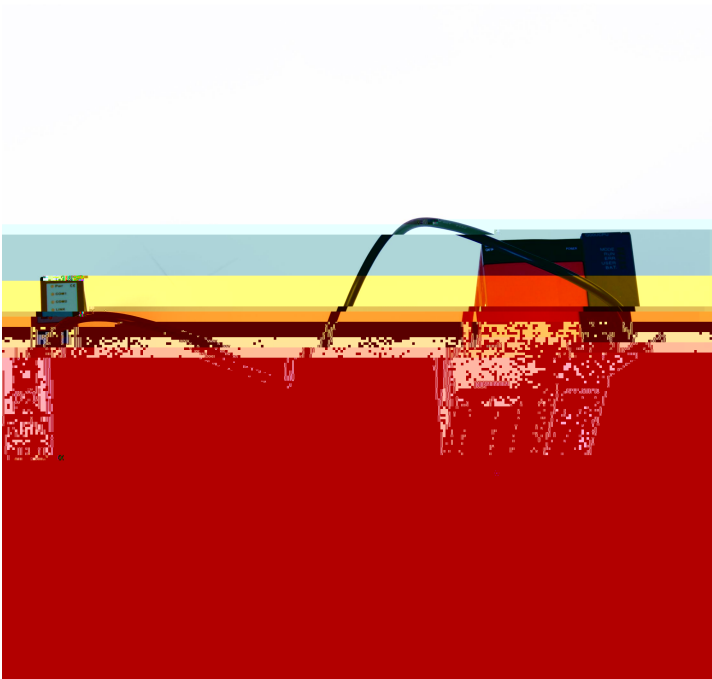
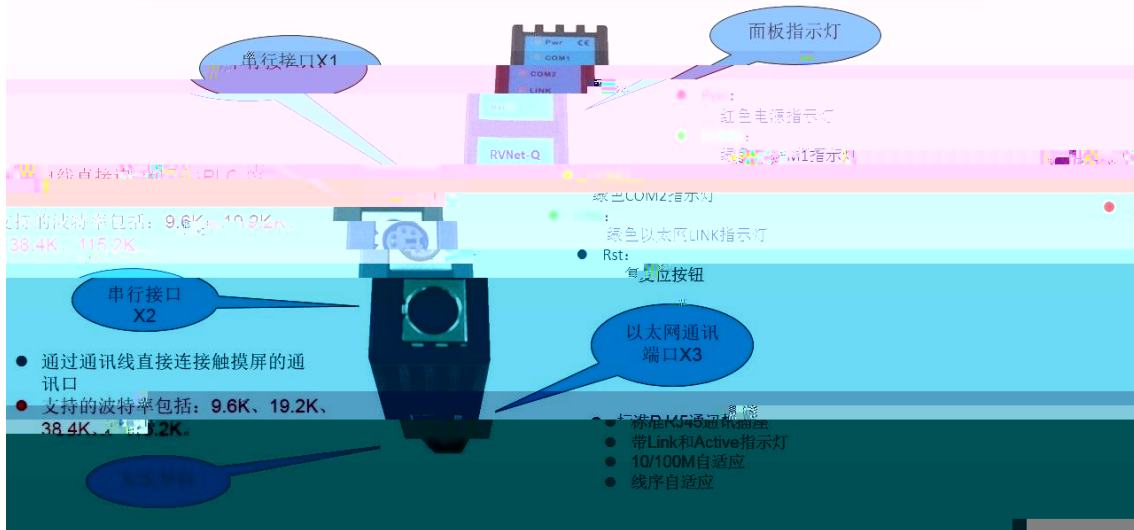
RVNet-Q

Q PLC

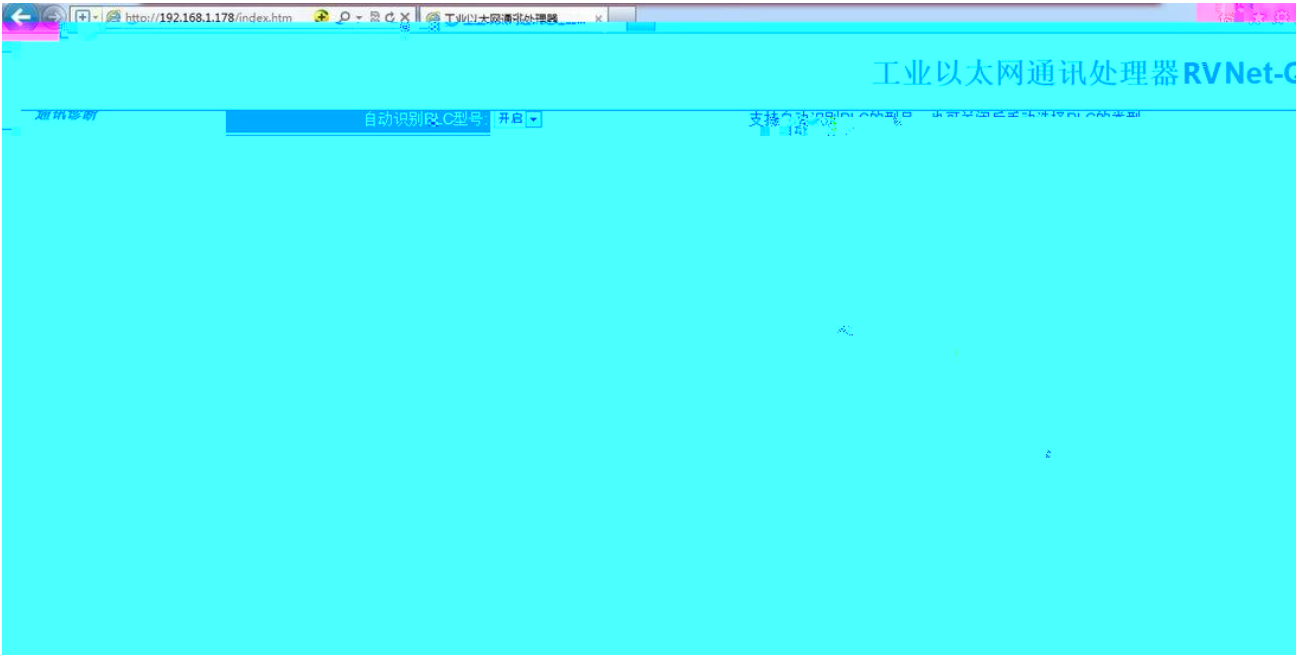




RVNet-Q产品的硬件和接口图



RVNet-T



PLC (COM1)——>PLC

PLC (COM1)——>

HMI (COM2)——>

“HMI (COM2)——>”

“RVNetTCP”

RVNet-Q 3

PLC (COM1)——>PLC

PLC (COM1)——>

HMI (COM2)——>

“HMI (COM2)——>”

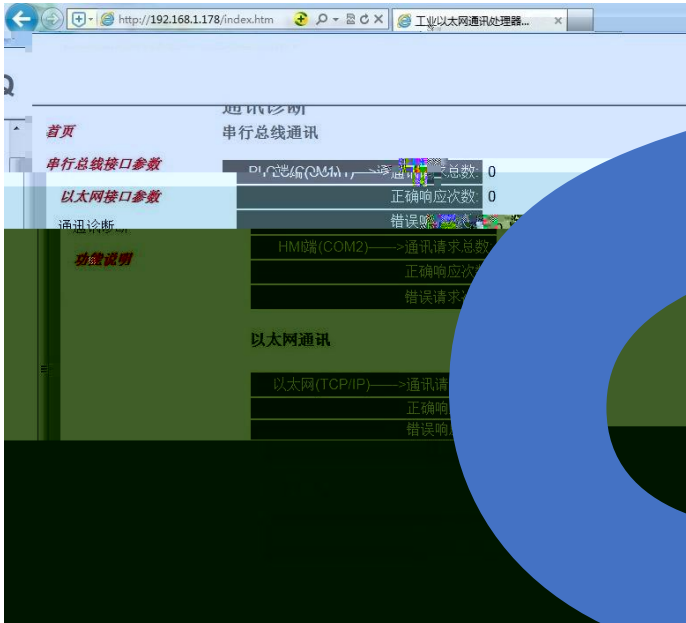


RVNet-Q IP

[]

RVNet-Q

b



PLC (COM1)——>

PLC

PLC
PLC

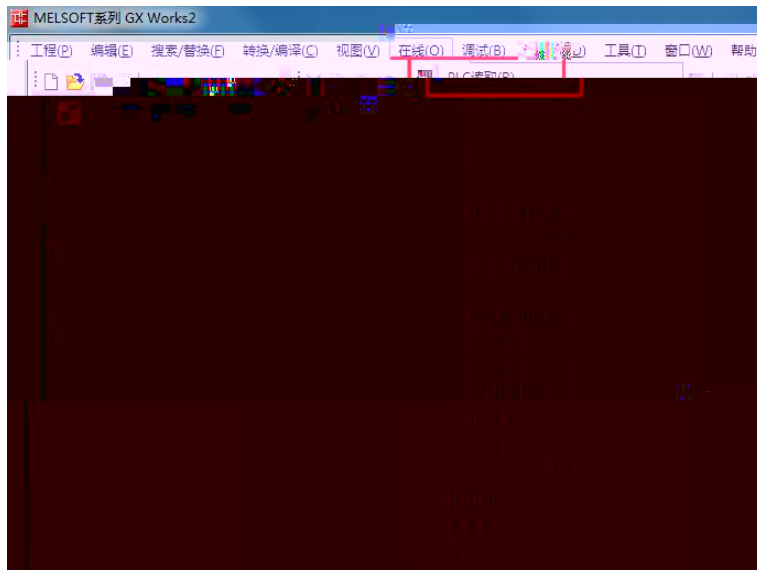
HMI (COM2)——>

(TCP/IP)——>

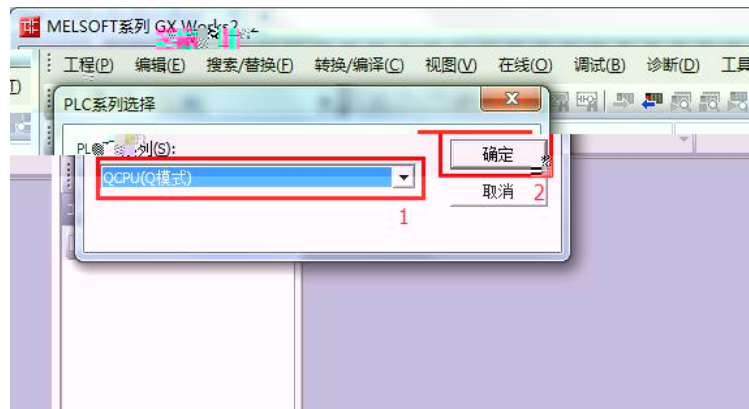
TCP
RVNet-Q
RVNet-Q

S7TCP

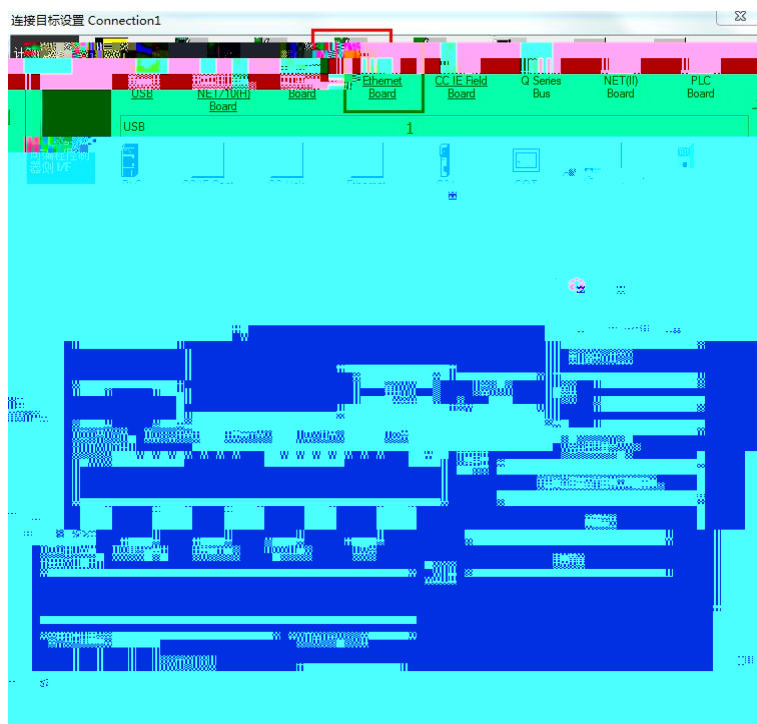
v



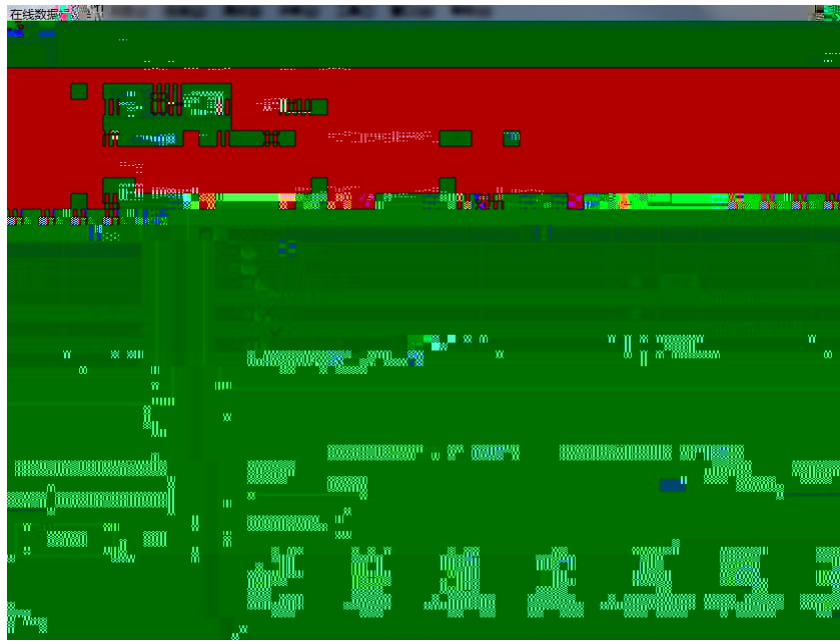
2. Q (mode) " "



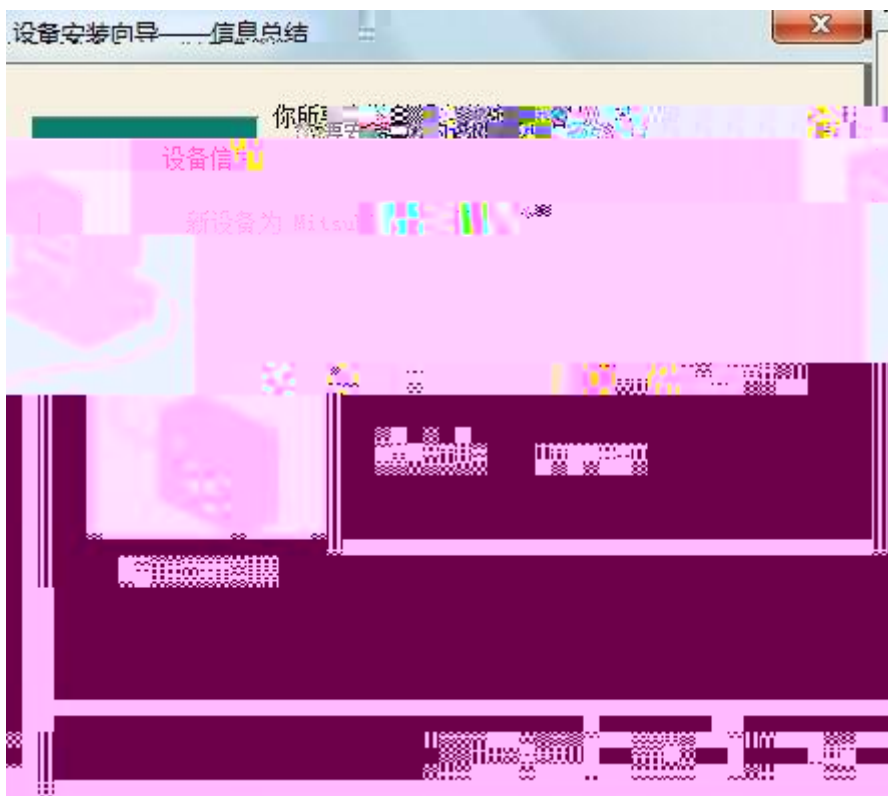
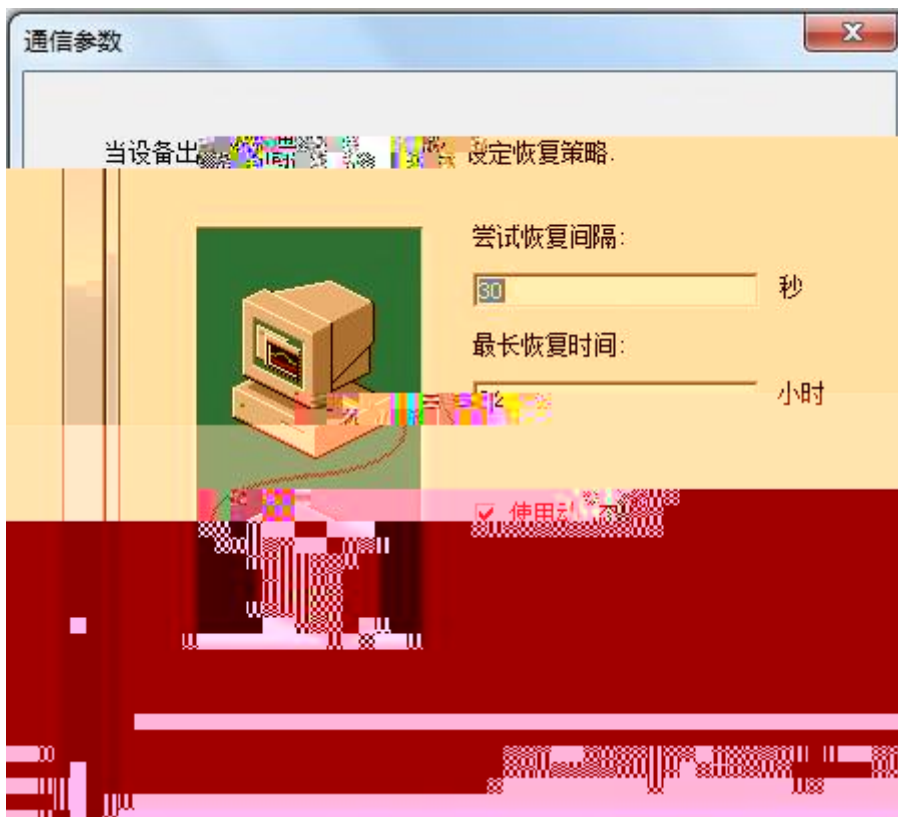
3. " "

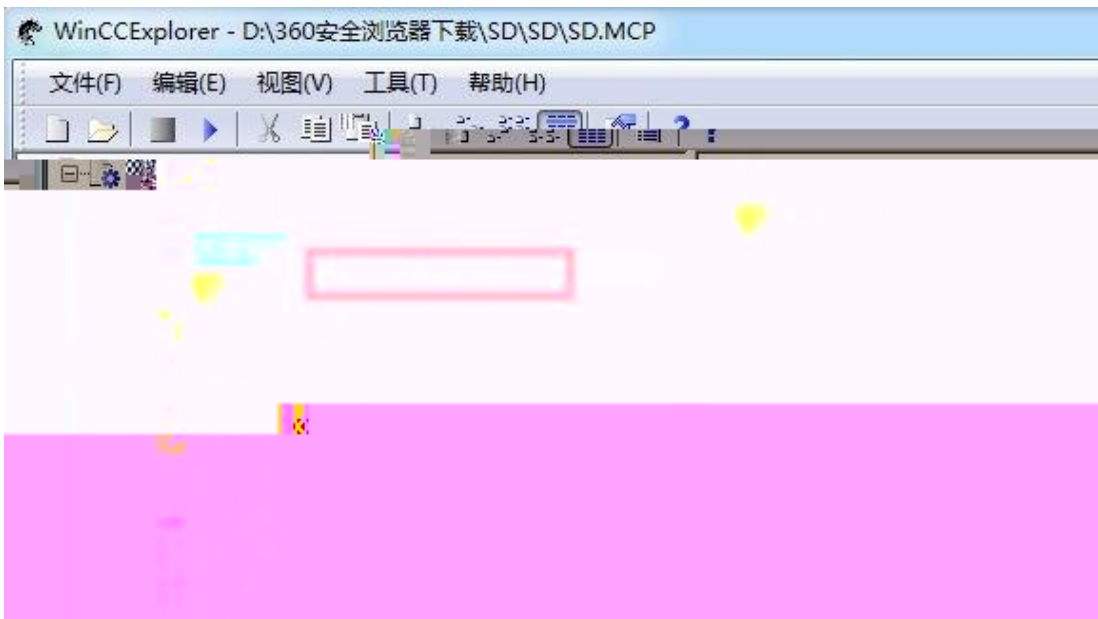


5.

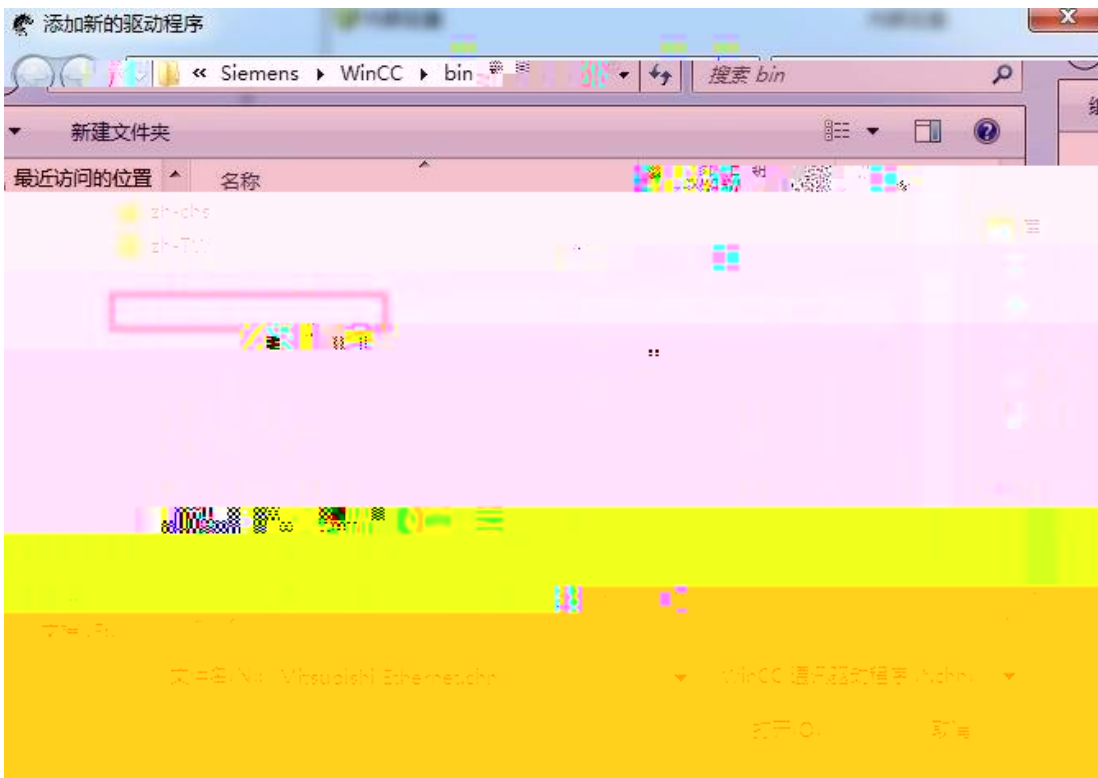


6.

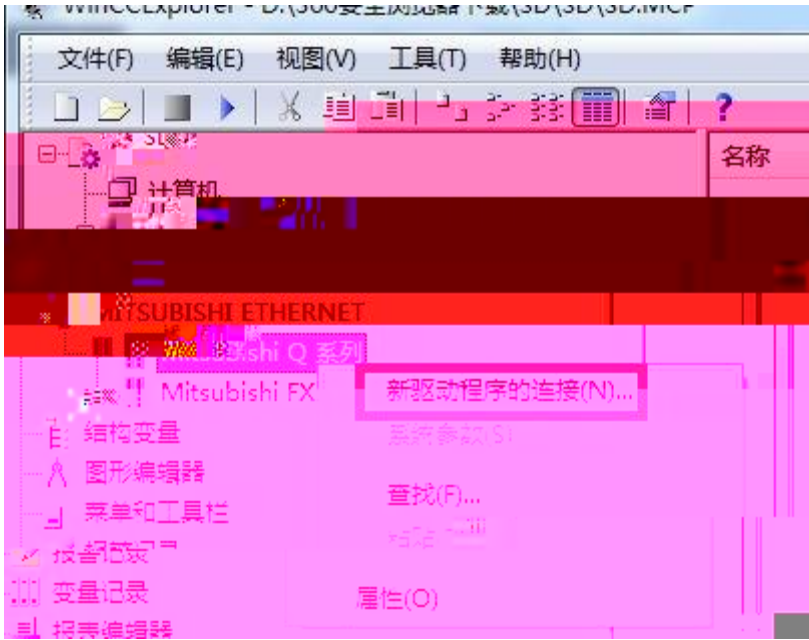




2. " Mitsubishi Ethernet.chn"



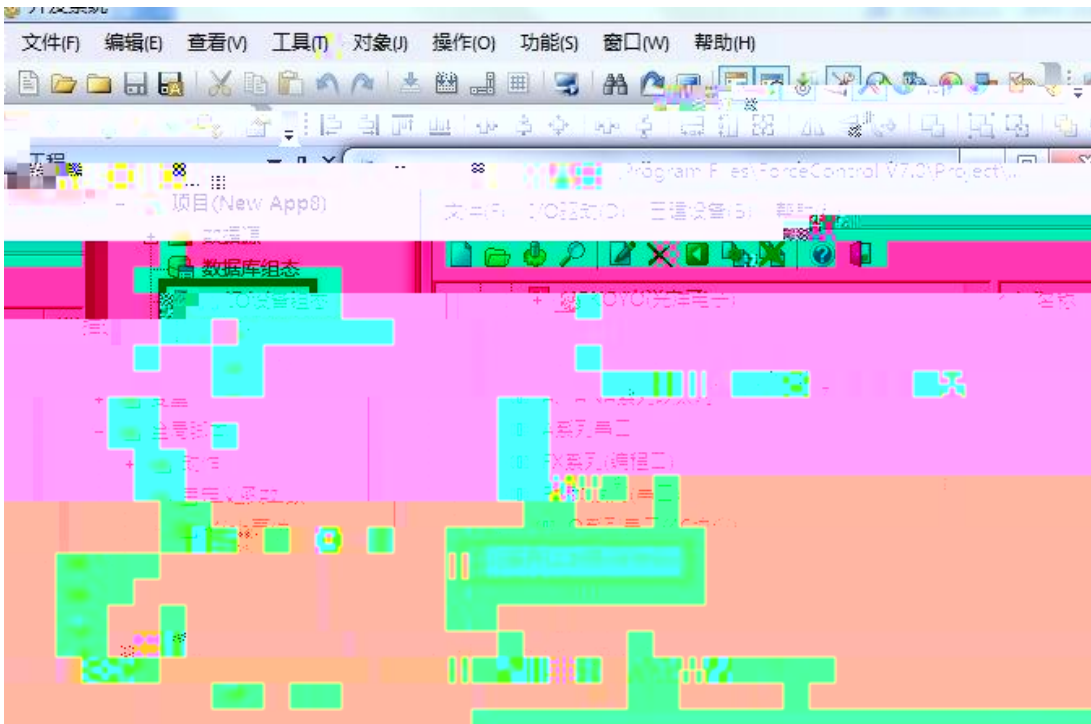
3. " Mitsubishi shi Q " " " "



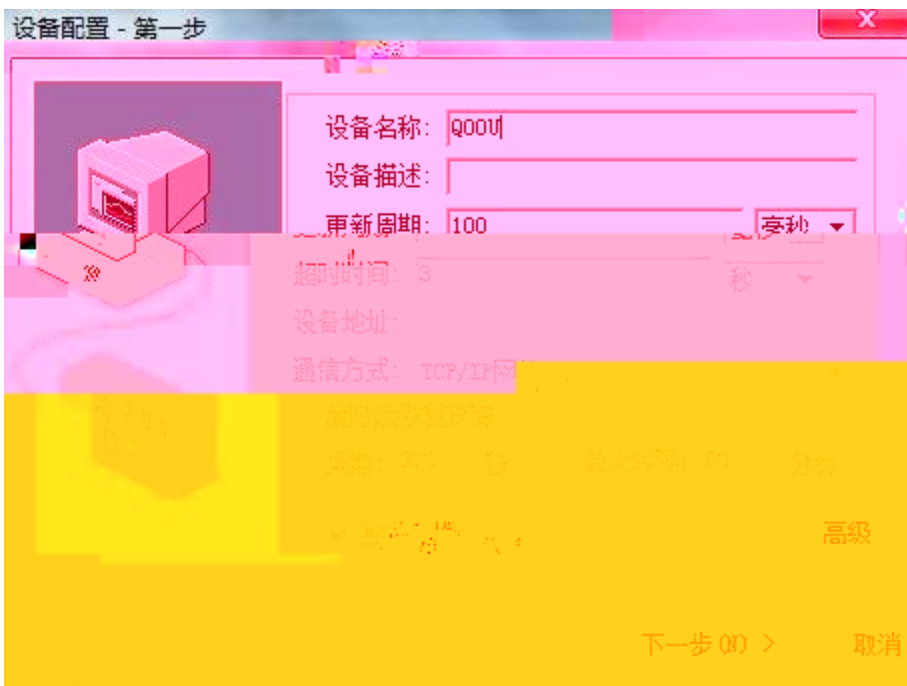
4. " " IP " 5002" " TCP" PC " 255"



1. " IO " PLC " MITSUBISHI Q 3E



2 " " " "



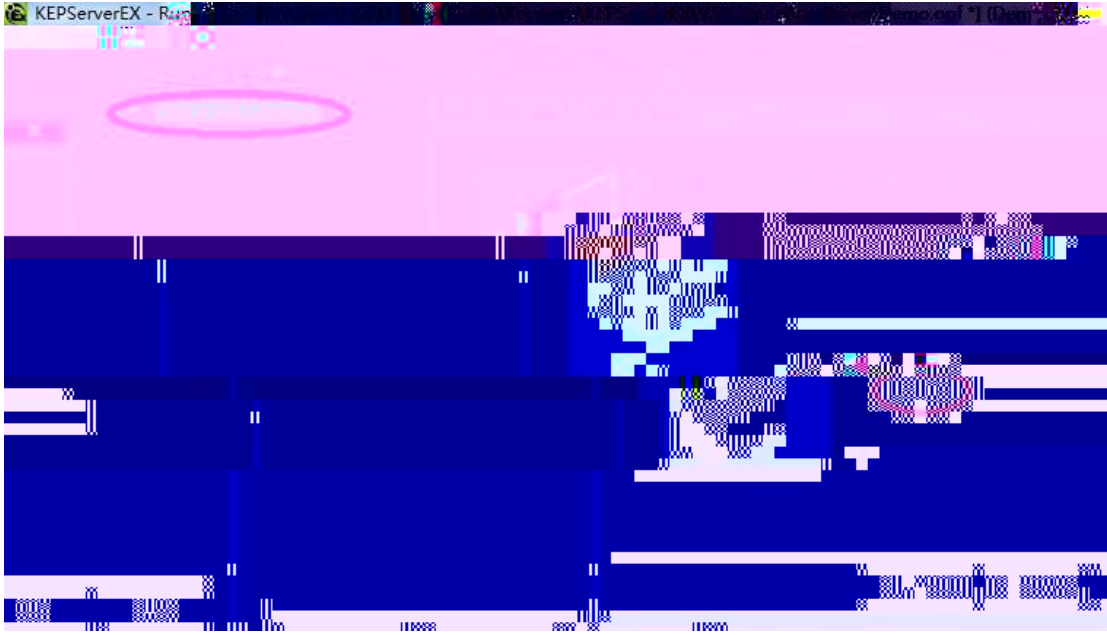
3" IP " RVNet-Q IP " " 5002



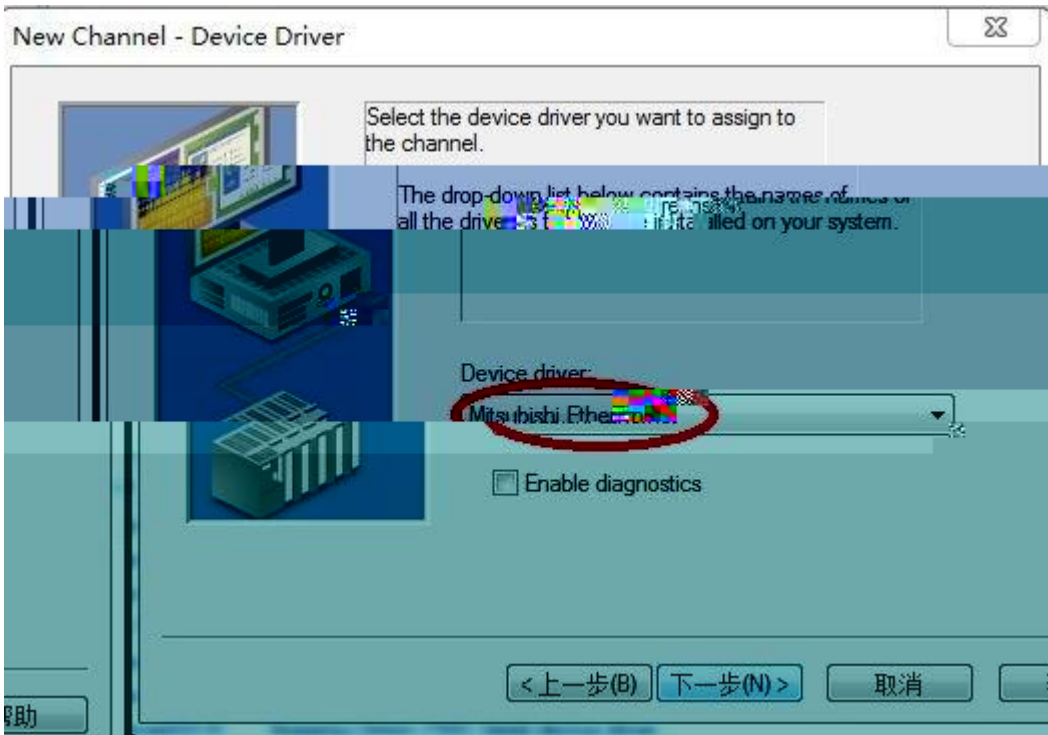
4. " " " "



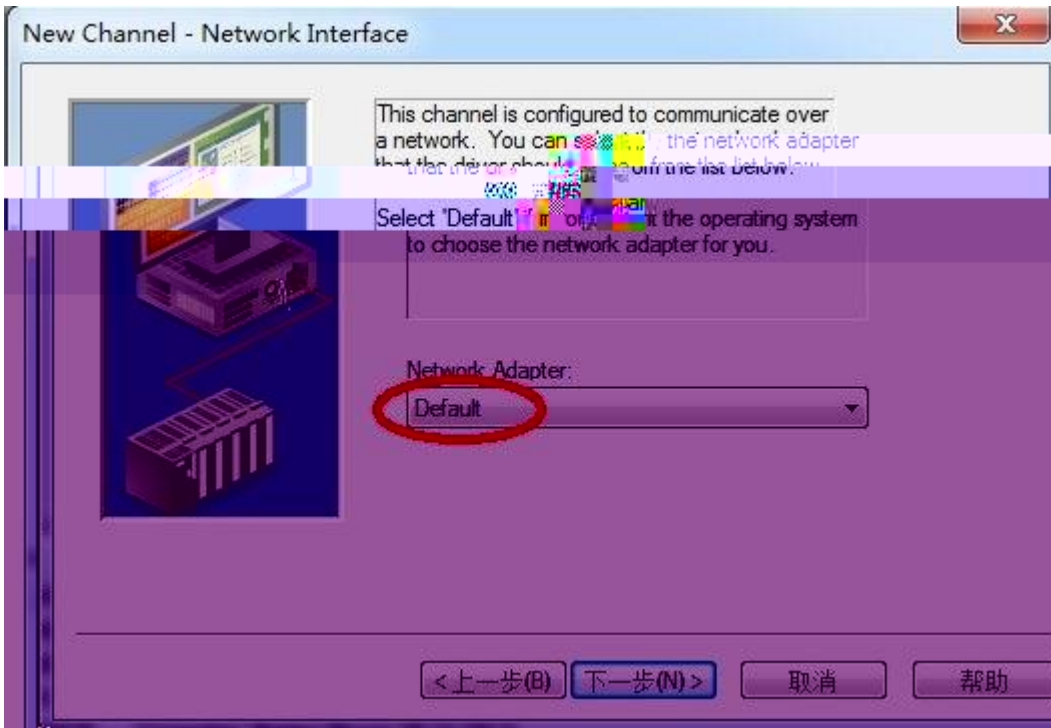
1. KEPServerEX " Click to add a channel" " "



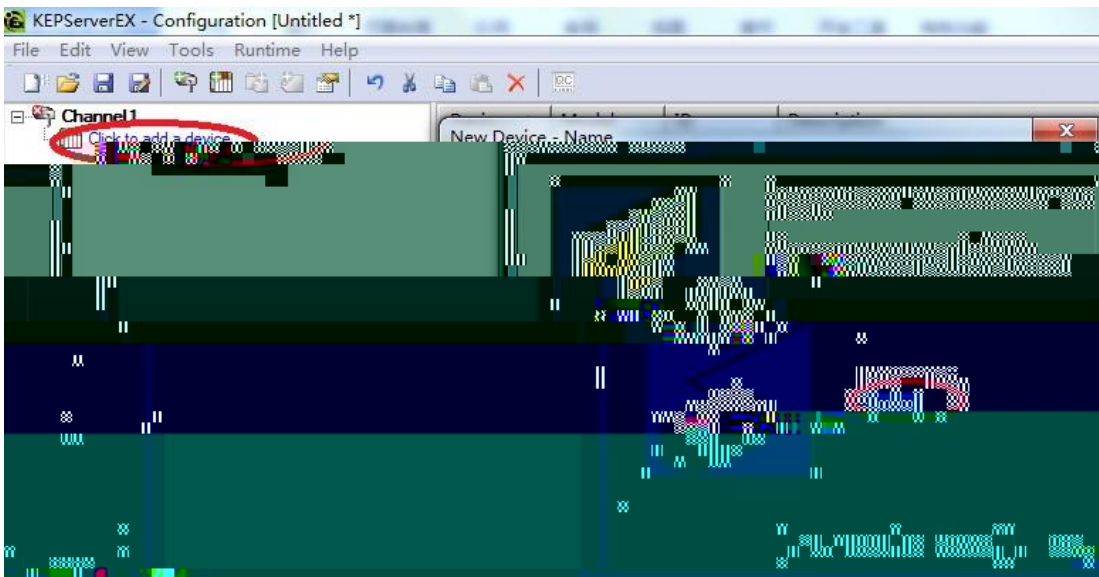
2 " Mitsubishi Ethernet"



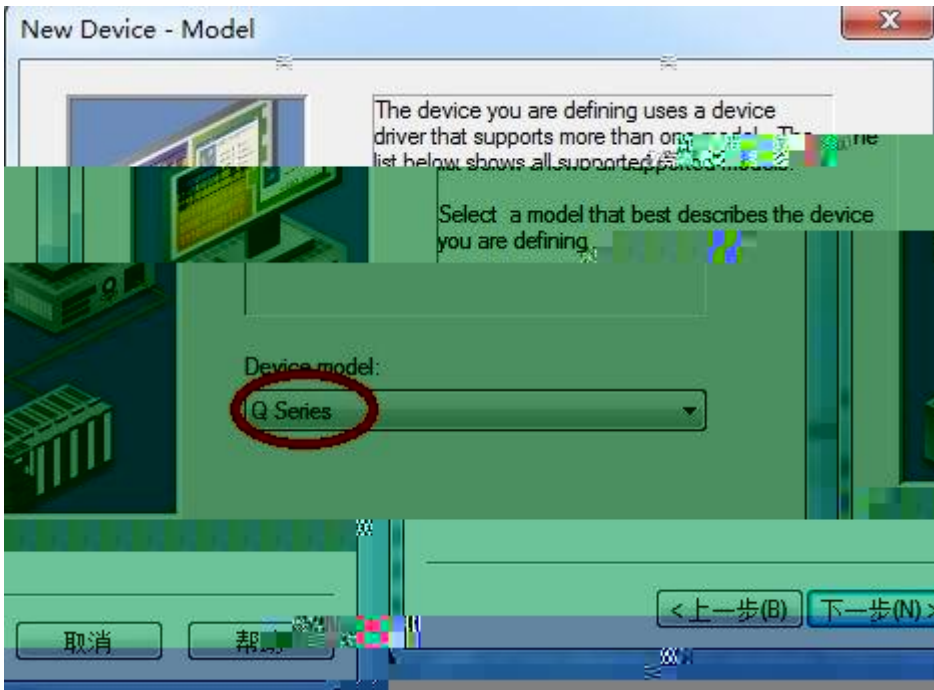
3 "Default"



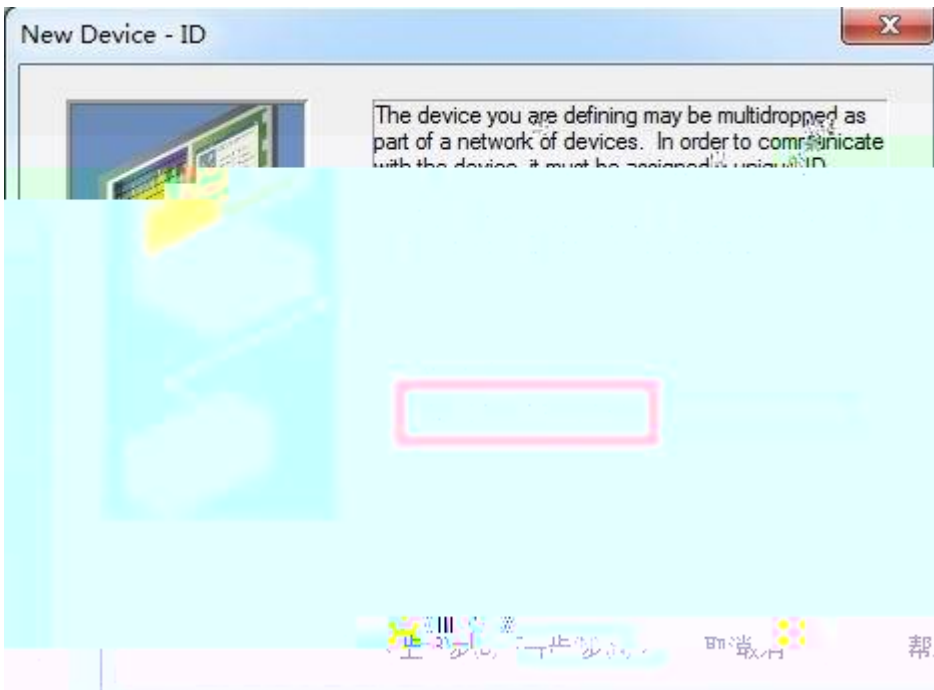
4 " click to add a device" ,



5. PLC

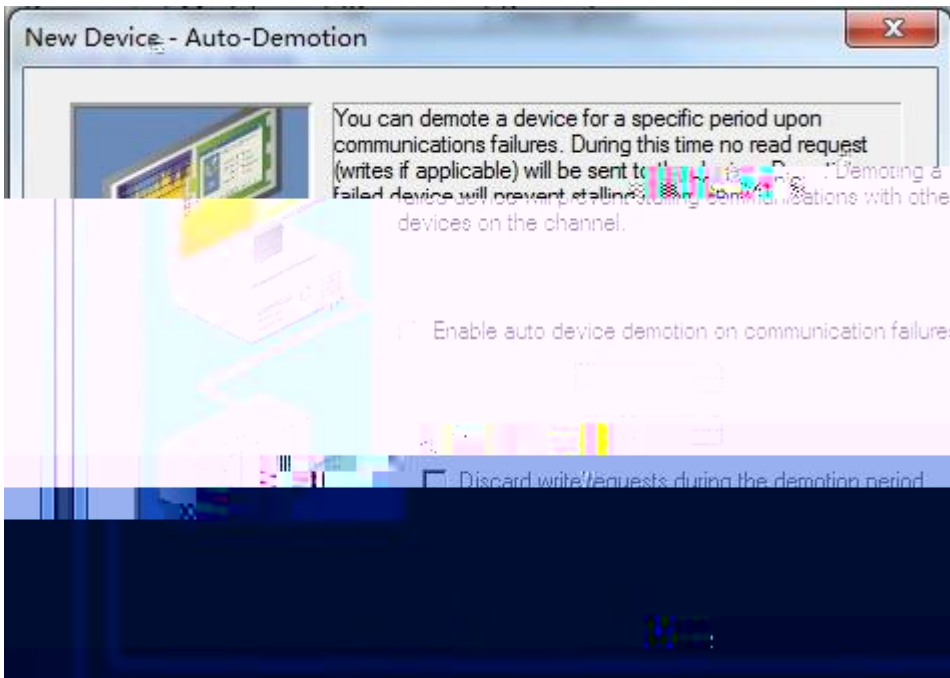


6. IP :NO:255 NO 255

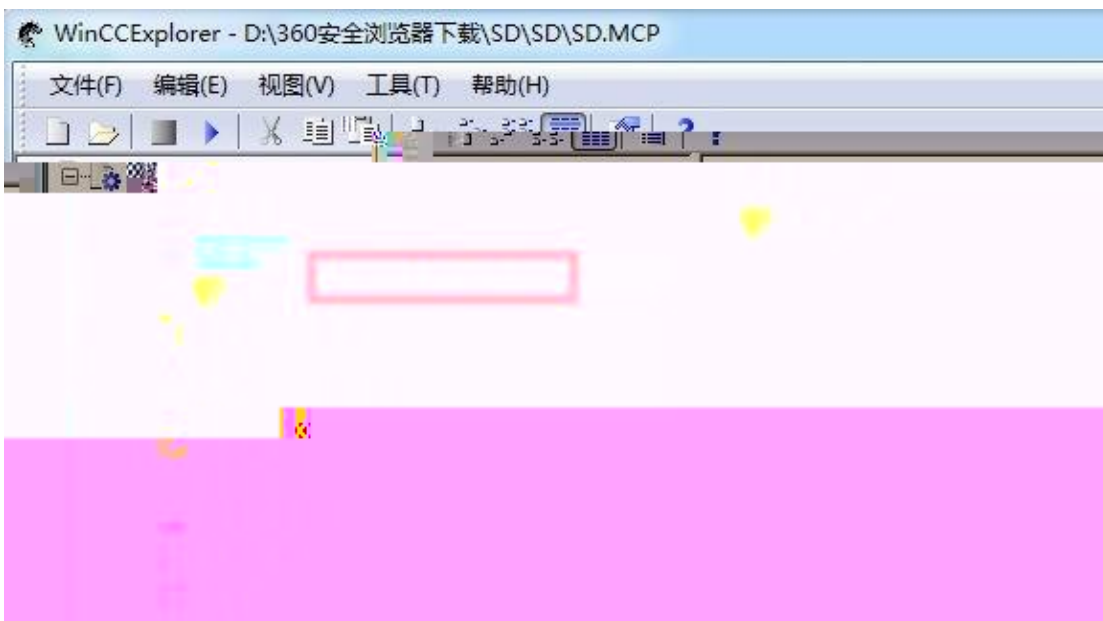


7.IP "TCP/IP" 5002

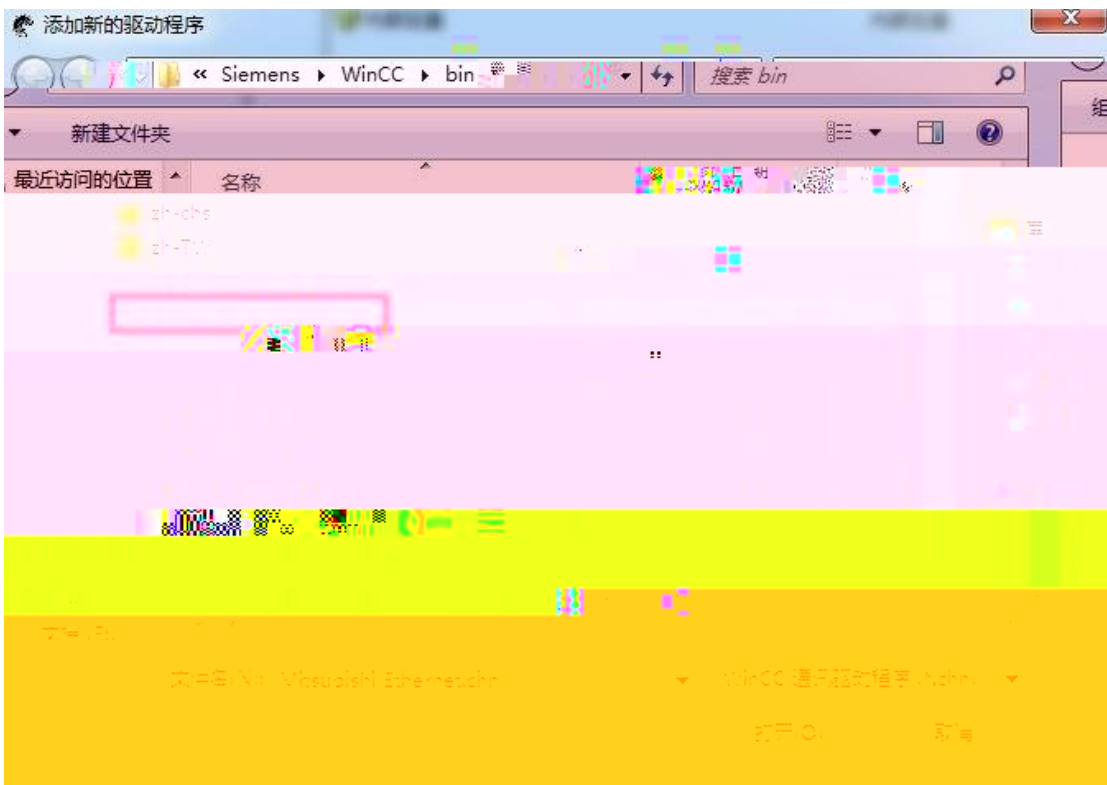




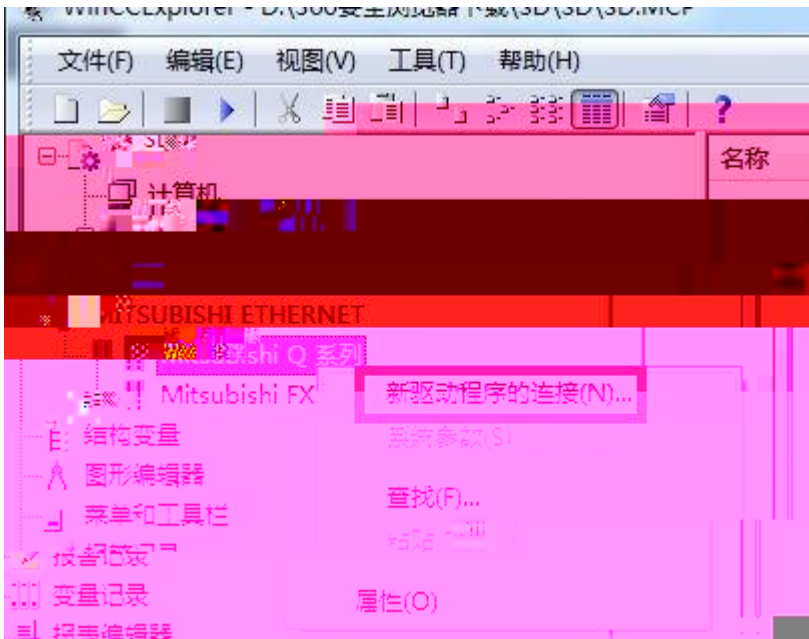
1. " " " "



2. " Mitsubishi Ethernet.chn"



3. " Mitsubishi shi Q " " " "



4. " " IP " 5002 " TCP" PC " 255"



RVNet-Q

ModbusTCP

ModbusTCP

Modbus	Q	PLC	
000001		Y0	Ym = 000001+m
008201		DY0	DYm = 008201+m
016401		M0	Mm = 016401+m
024601		SM0	SMm = 024601+m
026701		S0	Sm = 026701+m
034901		V0 2670	p

FC1() FC1:512
 FC5() FC5:1
 FC15()

① m 16 HEX , Y1F m 1F Y1F 000001+31
 = 000032 31 1F

2 ModScan32

\ \ modscan2_cr.rar

1. ModScan32

2. Connection/Connect Remote TCP/IP Server RVNet-Q IP Service 502
 [OK] 1

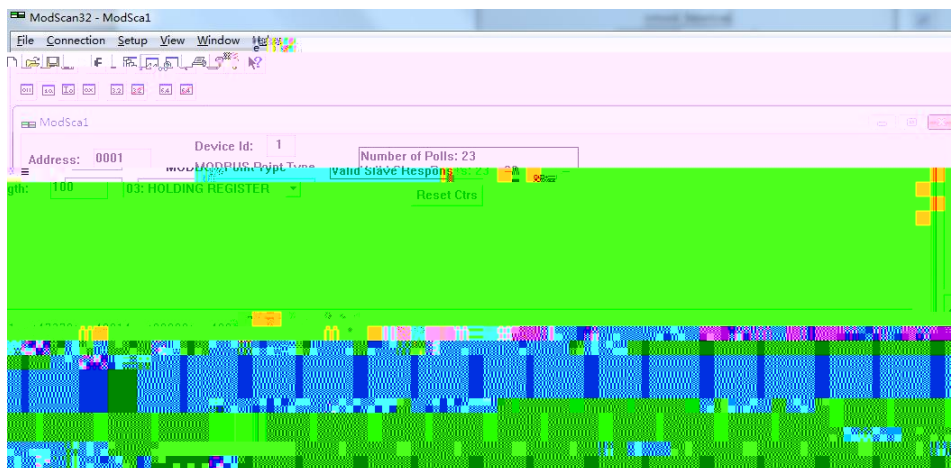


1

3. " ModSca1" Device ID PLC 1 03:HOLDING REGISTER
 Address = 0001 Length = 100

4. 400001 400100 16 Q PLC D0 D100

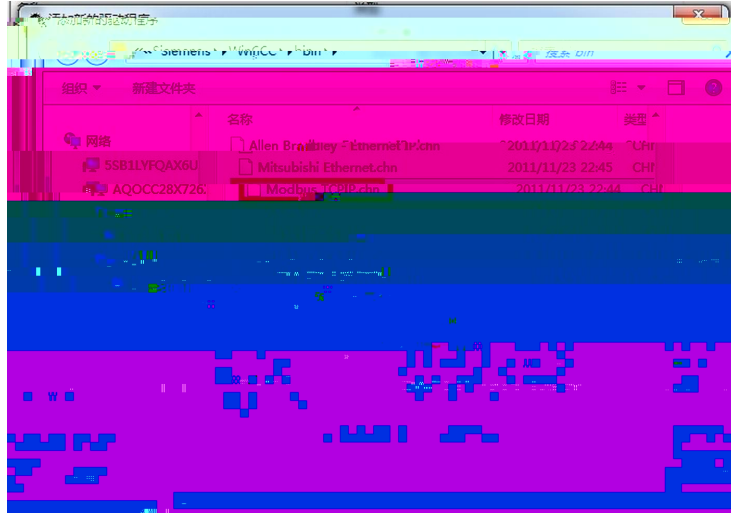
2



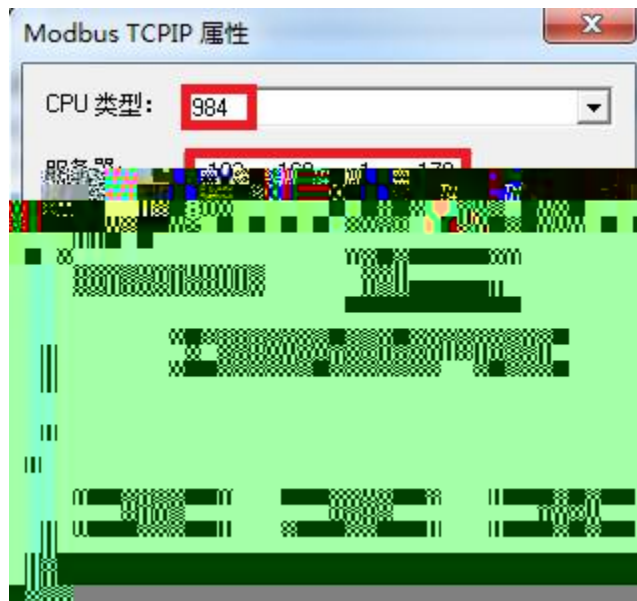
2

5.

1. Wincc
“Modbus TCP/IP.chn”



2. “Modbus TCP/IP #1”
“ CPU ” “ 984 ” “ ” RVNet-Q IP ,



		MD6			
		9.6K	19.2K	38.4K	115.2Kbps
		Q			
X2	HMI	RS232			
		MD6			
		9.6K	19.2K	38.4K	115.2Kbps
		Q			
		GX Works2			
OPC		KepWare OPC			
		IE	192.168.1.178		
		Q		24VDC	
		24VDC/100mA			
		0~60			
		90%			
		35mm			

